

Head Heat Map Analysis

Nodefield	Total #cases	# Cases plotted in heat maps	RMS VALUES					
			FREQ	min	max	NORM	min	max
in	472	470	0.4207	-0.0932	1.5976	17.7385	-5.7248	79.6983
inc	5	5						
la	1648	1644	0.9066	-0.2791	7.1006	10.8364	-7.3592	106.0360
lc1	86	86	0.2059	-0.2917	2.9586	7.9441	-2.4360	88.1852
lc2	274	274	0.3534	-0.1299	3.9561	13.1433	-4.4983	87.2970
lc3	82	82	0.1632	-0.0780	1.0411	8.8500	-1.8296	76.7076
lc4	59	58	0.1403	-0.0582	0.6802	8.0334	-1.4234	54.3031
lc5	209	209	0.3052	-0.0844	1.8935	10.3009	-6.4884	91.2167
lcm	2	2						
lepit	43	43						
lg	783	780						
lic	8	8						
lim	2	2						
lip	2	2						
lo	41	41	0.1314	-0.1086	1.4417	6.0790	-4.2541	62.3761
lpop	31	31						
lposta	91	91	0.2734	-0.1608	2.9510	8.7638	-5.1534	69.7427
lprea	184	184	0.2285	-0.0890	2.8684	9.5117	-4.7276	102.3320
lsc	206	206	0.3278	-0.1116	2.5792	10.3894	-2.8279	66.5940
ltis	95	95						
pv	36	36						
ra	1603	1602	0.8454	-0.3025	7.7847	11.8707	-8.3526	104.2500
rc1	101	101	0.2050	-0.2832	3.0472	7.4619	-2.0113	92.6126
rc2	295	295	0.3034	-0.1361	3.8812	11.9277	-4.5974	93.7734
rc3	52	52	0.1360	-0.0592	0.6395	8.6566	-2.0423	44.4415
rc4	46	46	0.1242	-0.0689	0.4177	8.4511	-2.4186	58.2141
rc5	201	201	0.3159	-0.1142	1.7693	11.7547	-2.7174	72.6816
rcm	5	5						
repit	36	36						
rg	760	759						
ric	8	8						
rim	5	4						
rip	1	1						
ro	52	52	0.1511	-0.0561	1.3708	6.5405	-2.3159	77.2776
rp	27	27						
rpop	52	52						
rposta	80	80	0.2075	-0.1399	2.6431	7.9762	-5.4984	75.1931
rprea	160	160	0.2179	-0.1840	2.6003	8.8962	-2.9989	100.6760
rsc	195	193	0.2983	-0.1174	2.1230	10.4868	-5.0368	75.5844
rtis	97	97	0.2242	-0.0641	1.5238	5.2140	-2.7962	27.1663
sm	42	42	0.1327	-0.1608	1.4892	7.1833	-1.9052	70.5454
um	2	1						
TOTAL	8179	8163						

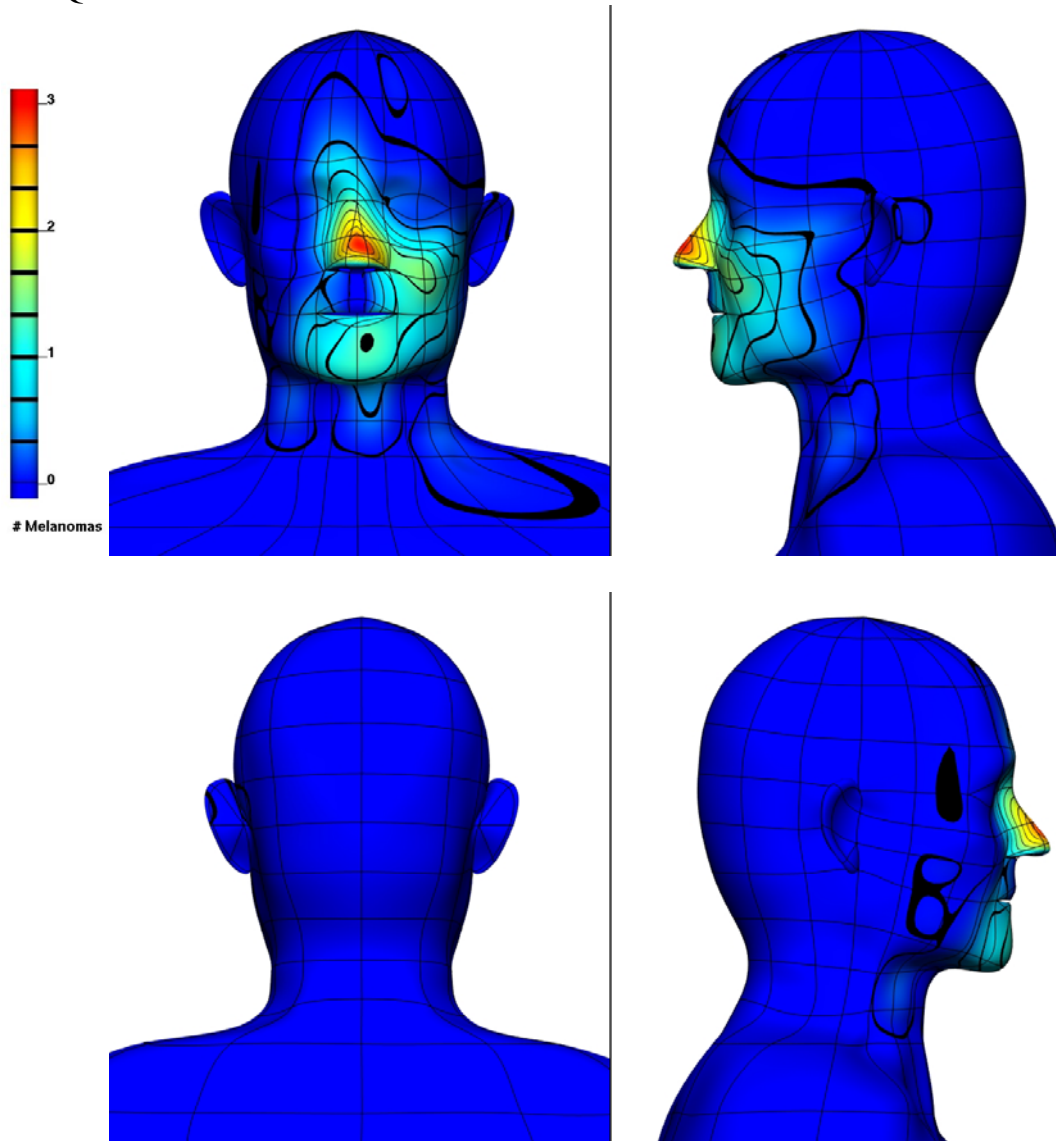
Normalised plots: Size glyphs: base 0, scale 0.08 wrt count
Melanoma site size key:

100% ●
75% ●
50% ●
25% ●

Cervical level I nodefields

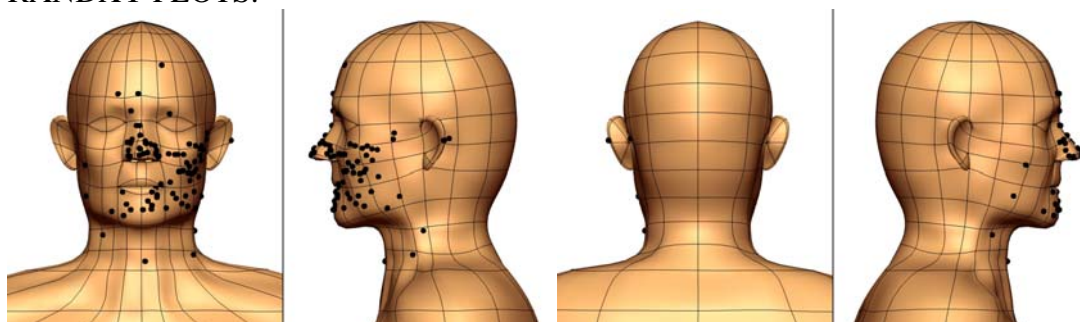
Left cervical level I drainage (lc1):

FREQUENCY PLOTS:



There is a line on the spectrum at 0, due to separating spectrum into 9 bands

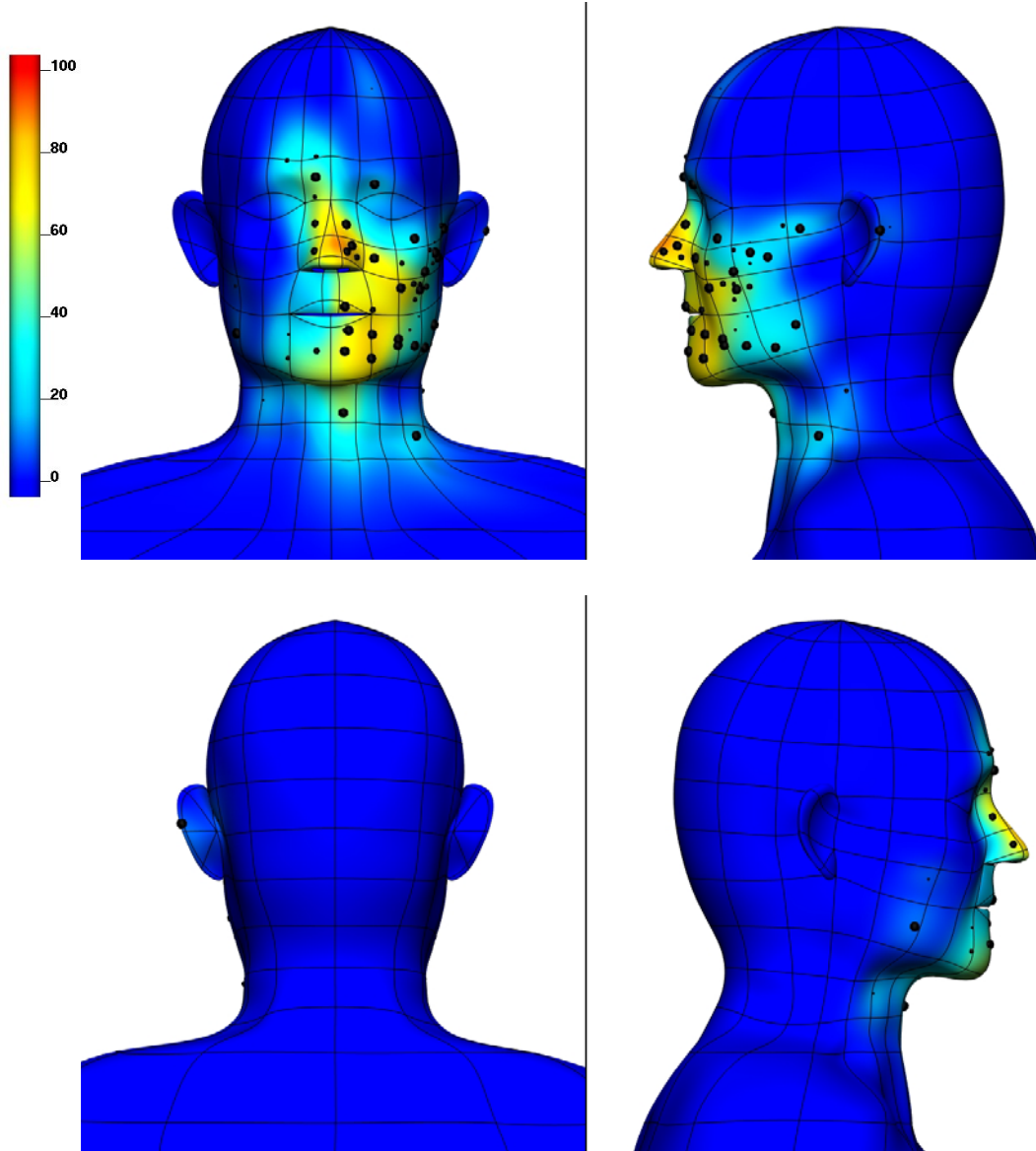
RANDXY PLOTS:



Cervical level I nodefields

Left cervical level I drainage (lc1):

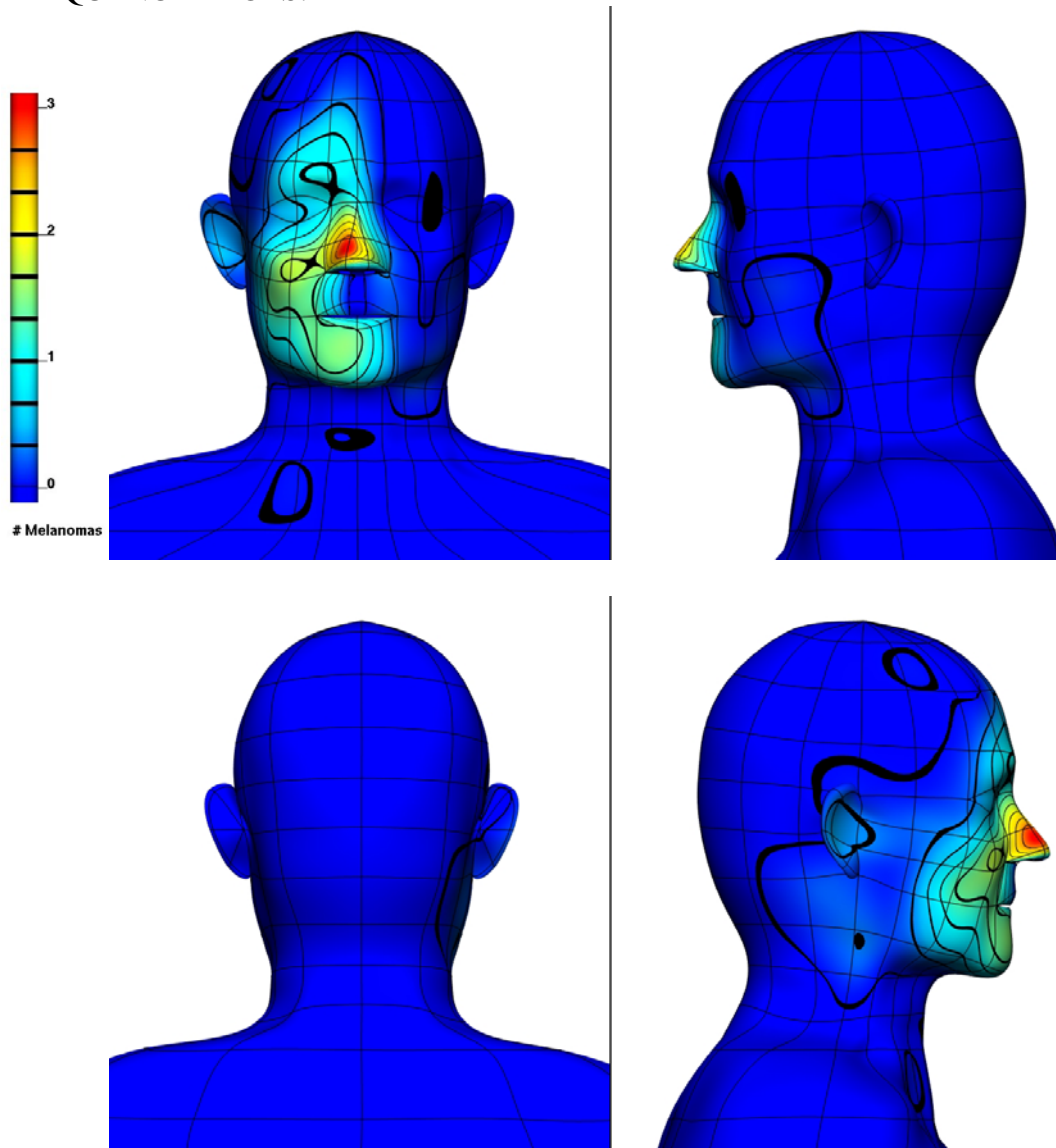
PERCENTAGE LIKELIHOOD PLOTS:



Cervical level I nodefields

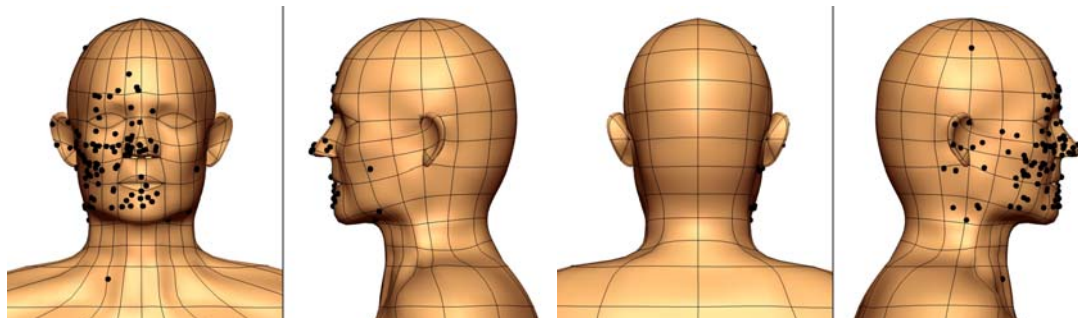
Right cervical level I drainage (rc1):

FREQUENCY PLOTS:



There is a line on the spectrum at 0, due to separating spectrum into 9 bands

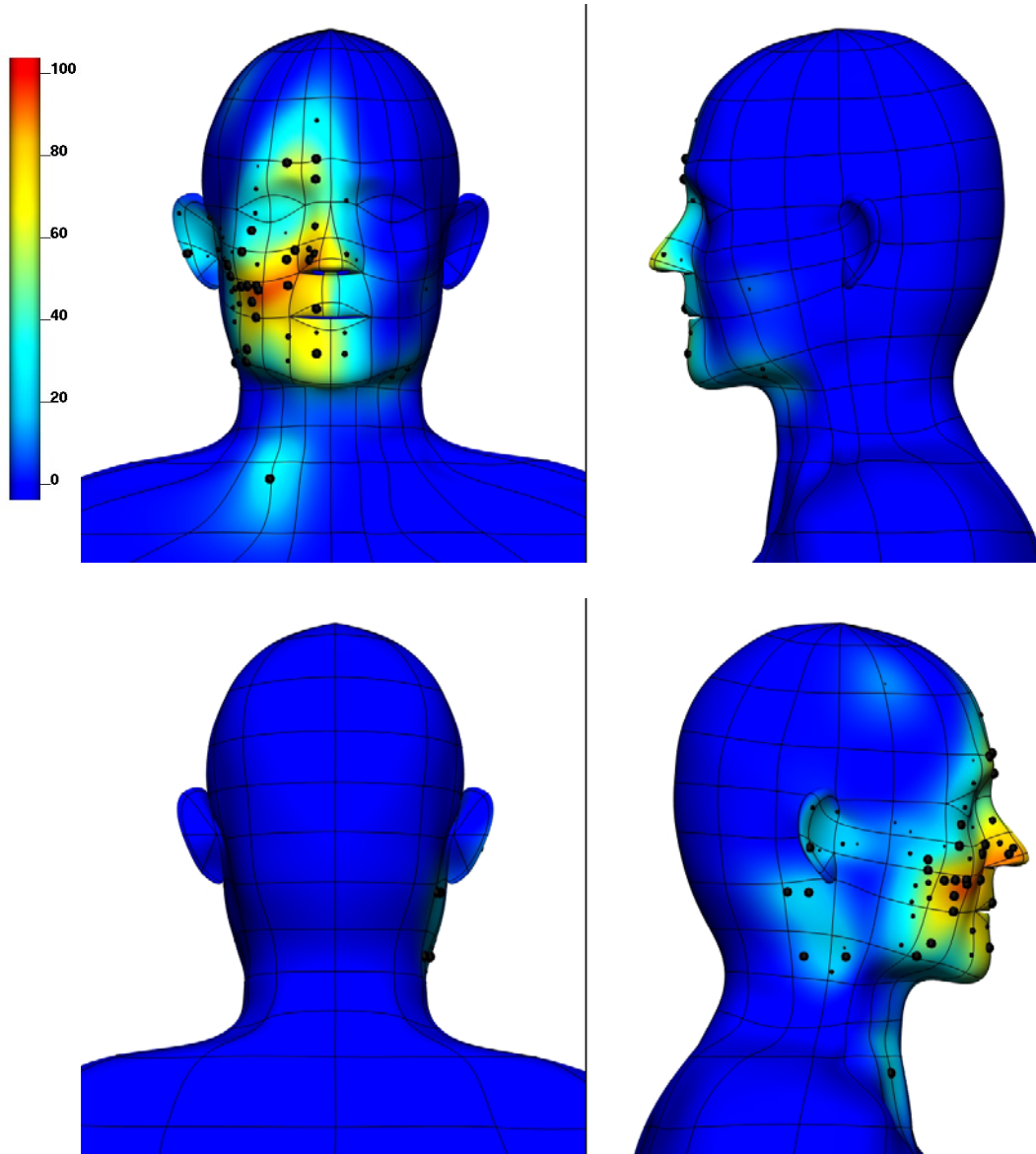
RANDXY PLOTS:



Cervical level I nodefields

Right cervical level I drainage (rc1):

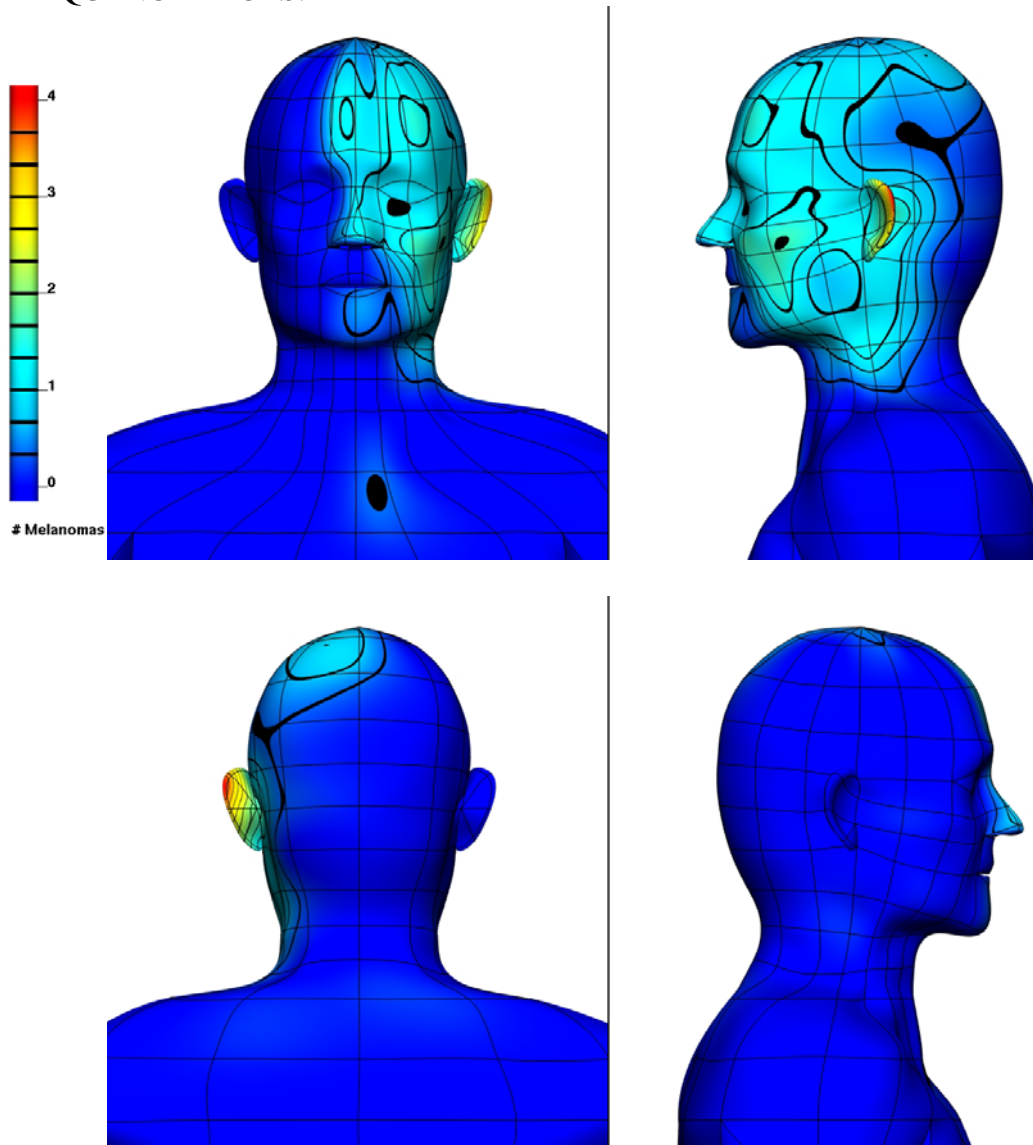
PERCENTAGE LIKELIHOOD PLOTS:



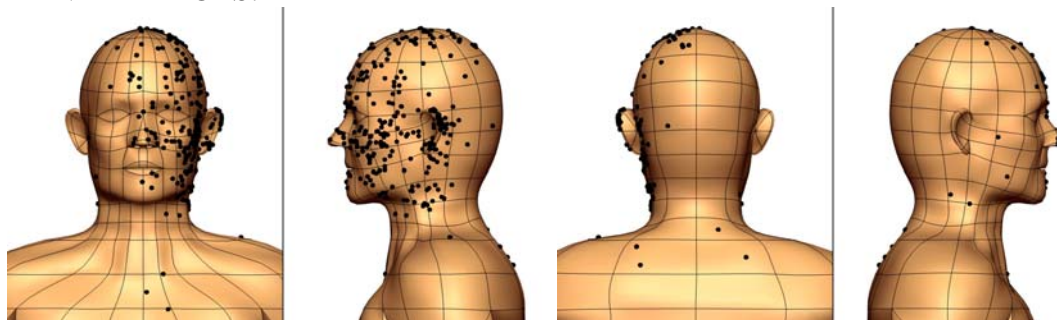
Cervical level II nodefields

Left cervical level II drainage (lc2):

FREQUENCY PLOTS:



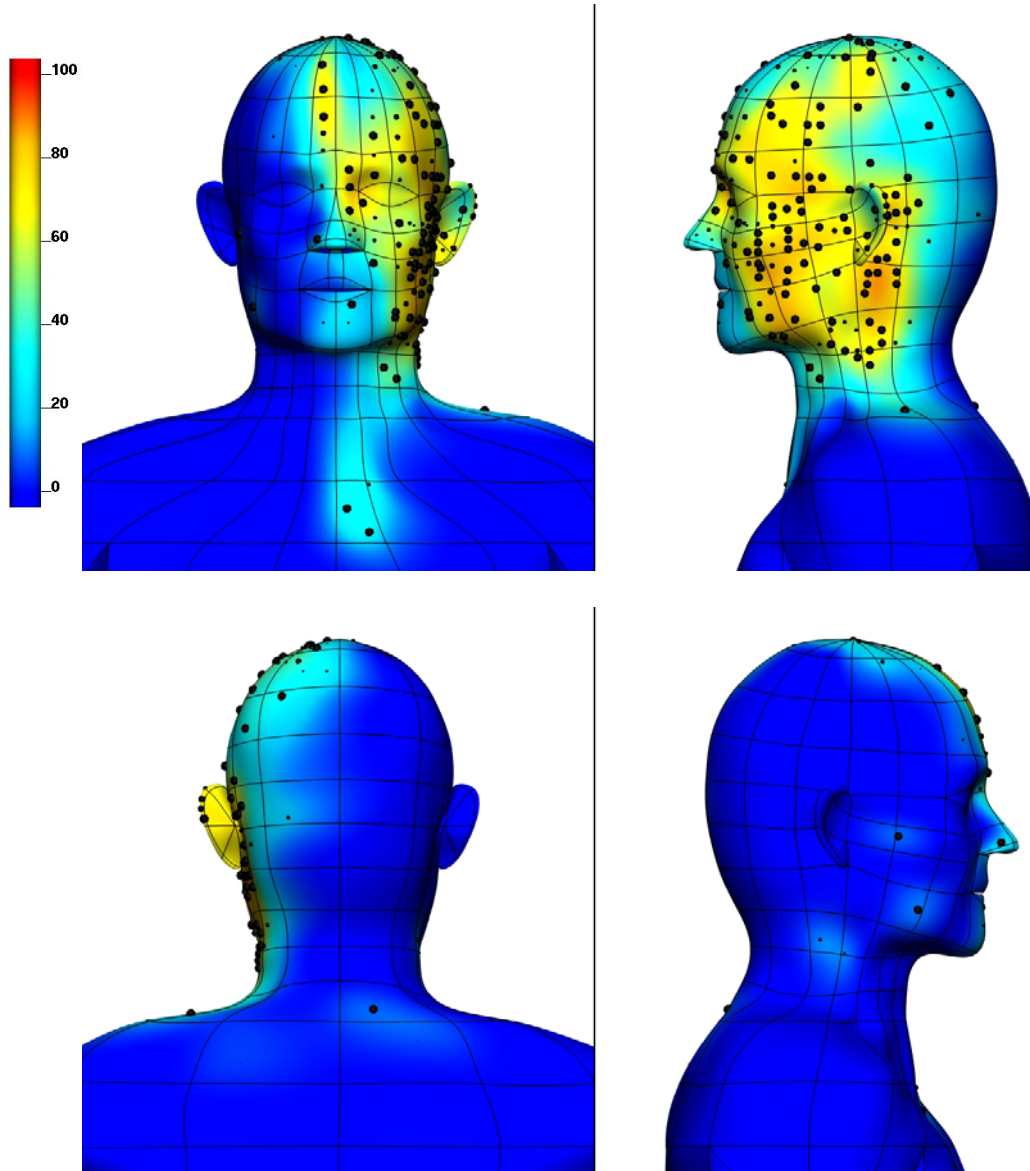
RANDXY PLOTS:



Cervical level II nodefields

Left cervical level II drainage (lc2):

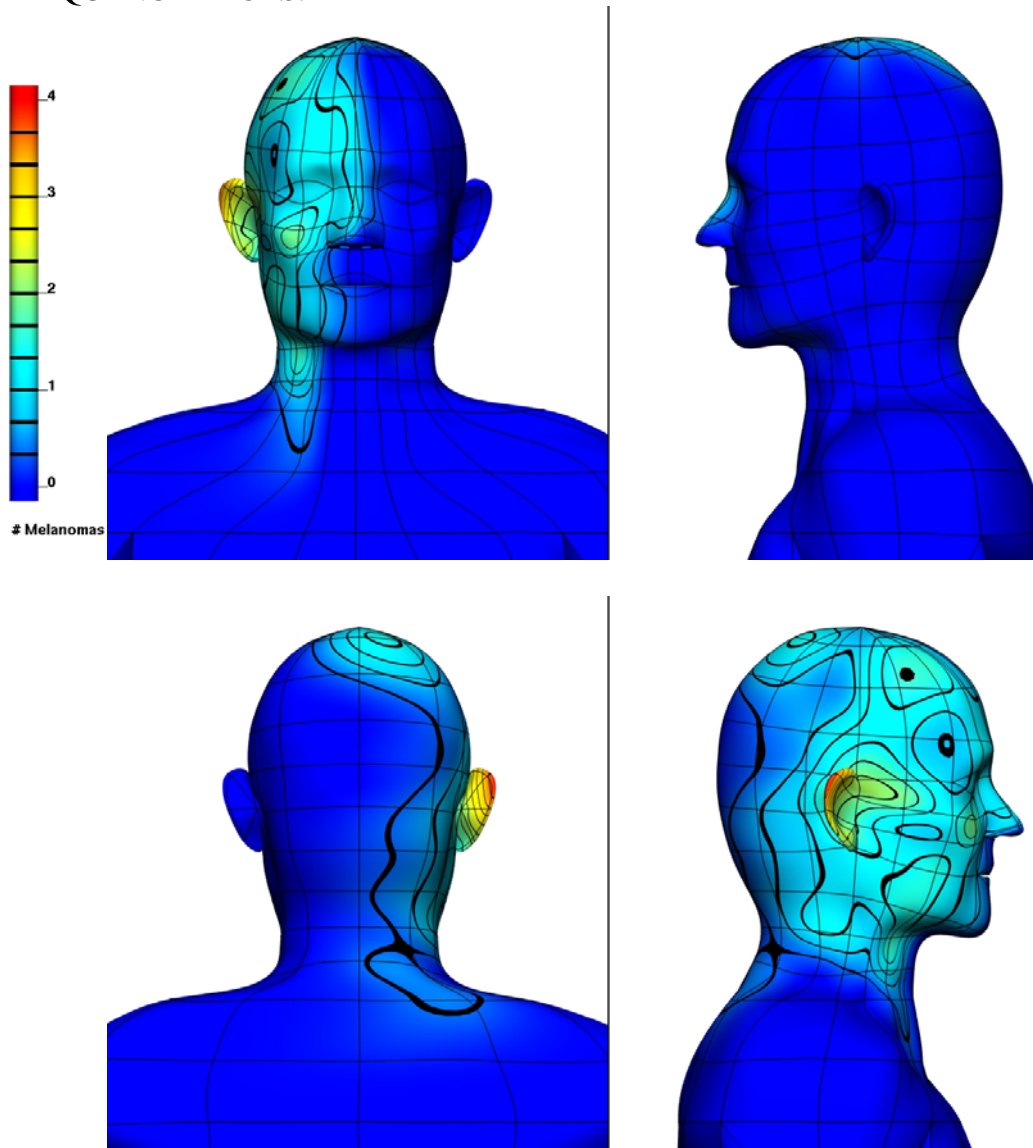
PERCENTAGE LIKELIHOOD PLOTS:



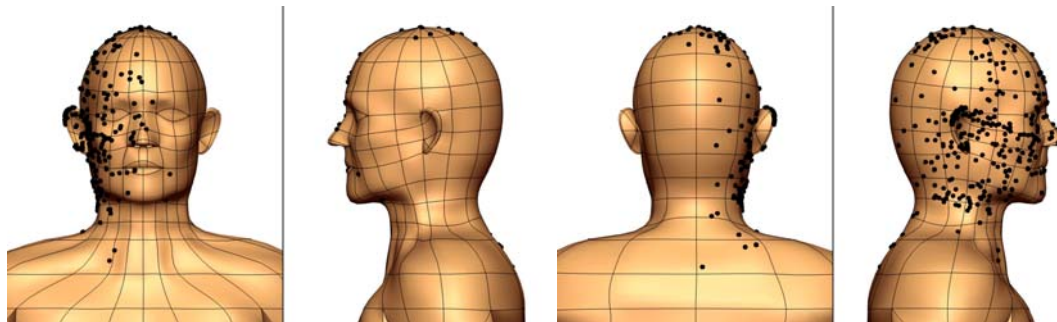
Cervical level II nodefields

Right cervical level II drainage (rc2):

FREQUENCY PLOTS:



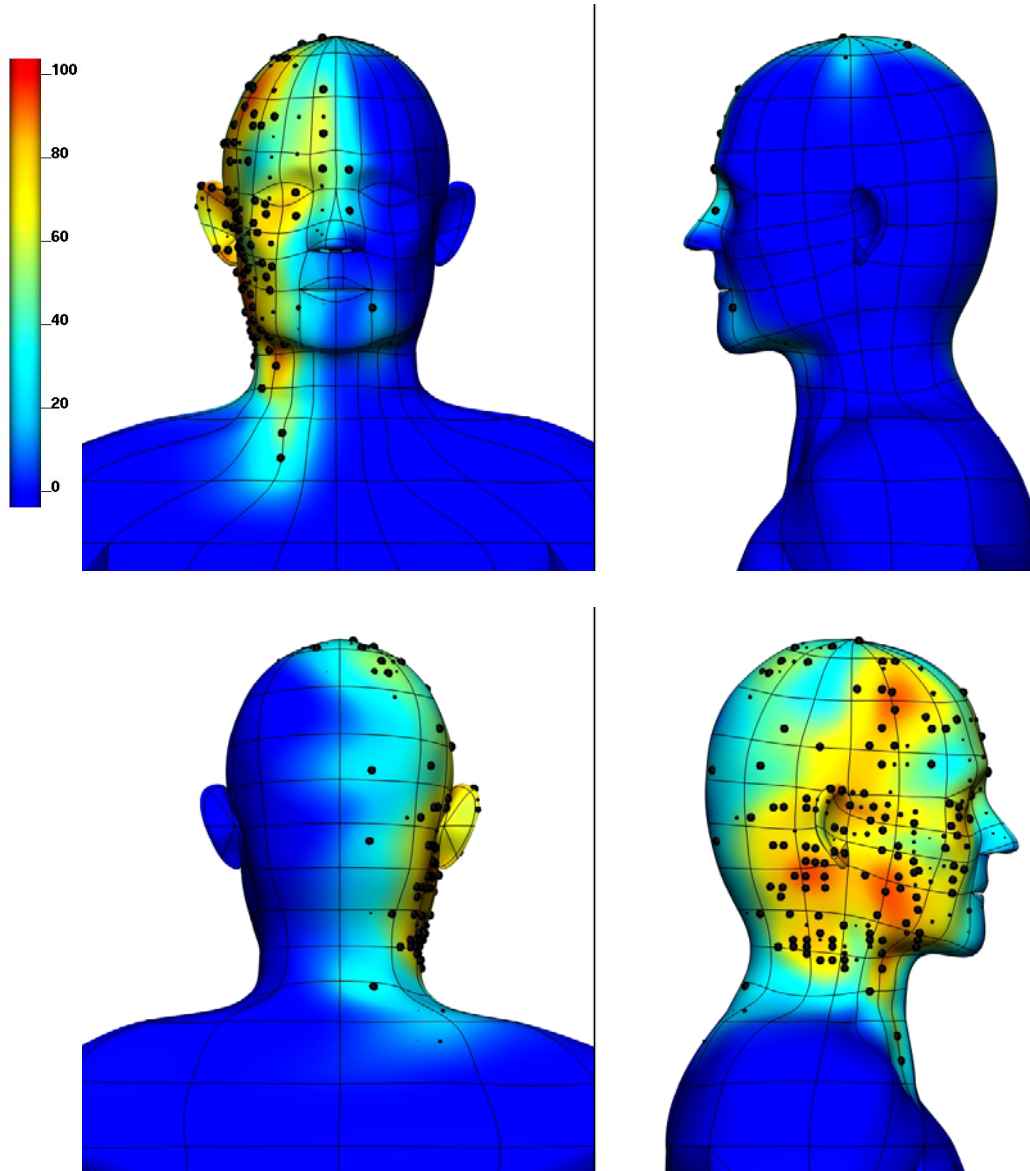
RANDXY PLOTS:



Cervical level II nodefields

Right cervical level II drainage (rc2):

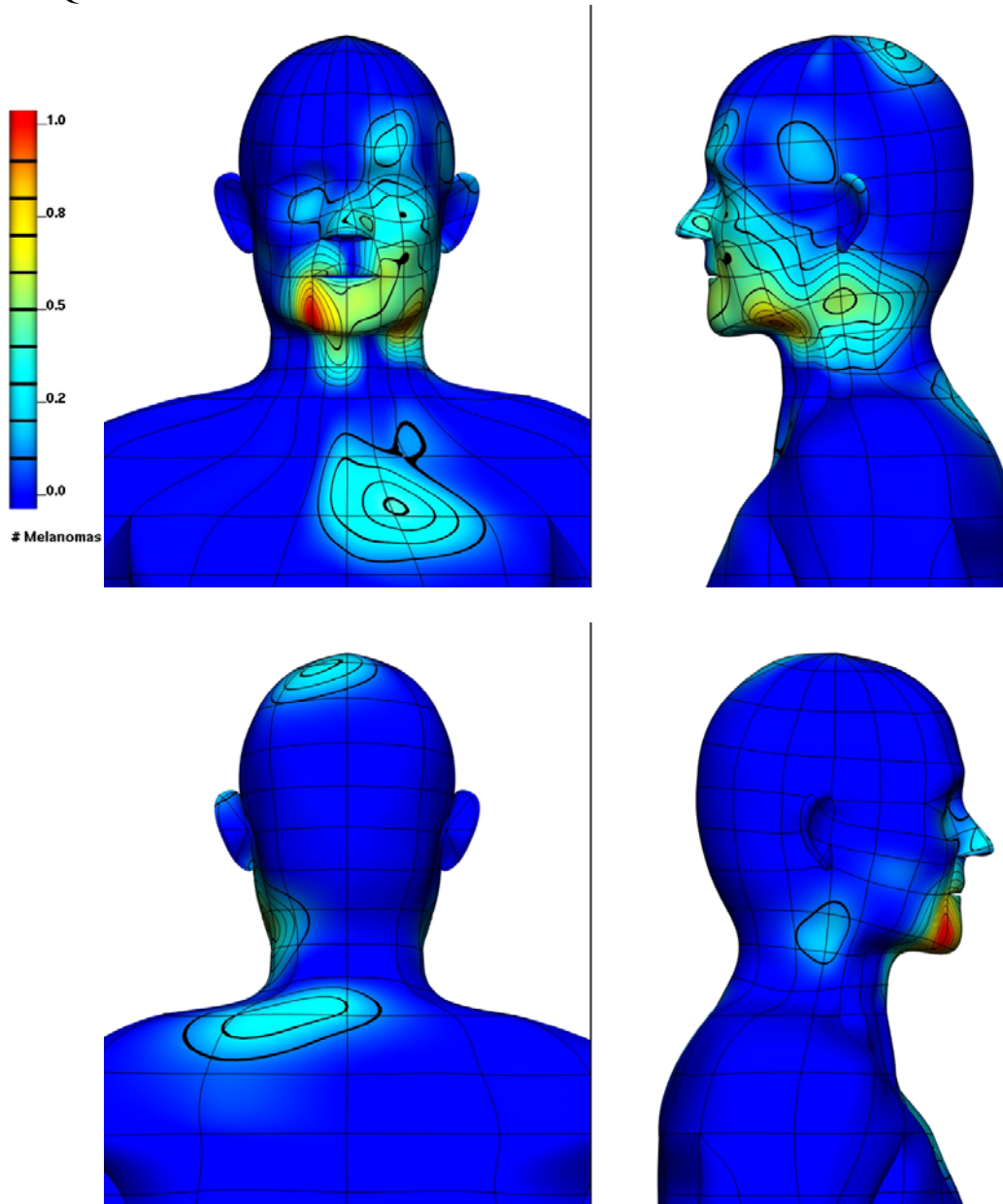
PERCENTAGE LIKELIHOOD PLOTS:



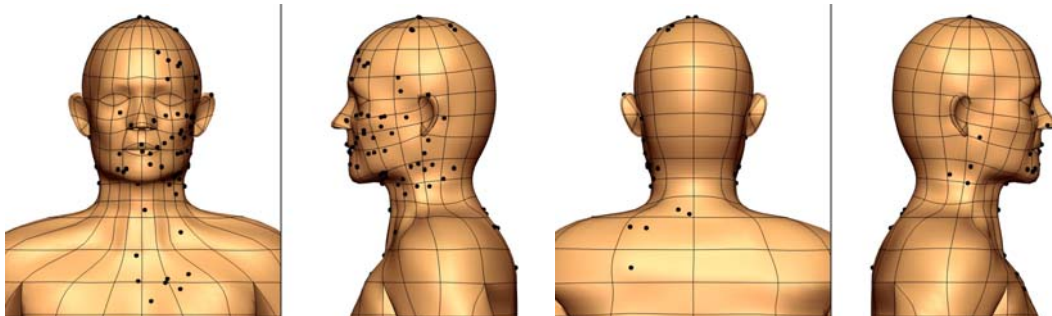
Cervical level III nodefields

Left cervical level III drainage (lc3):

FREQUENCY PLOTS:



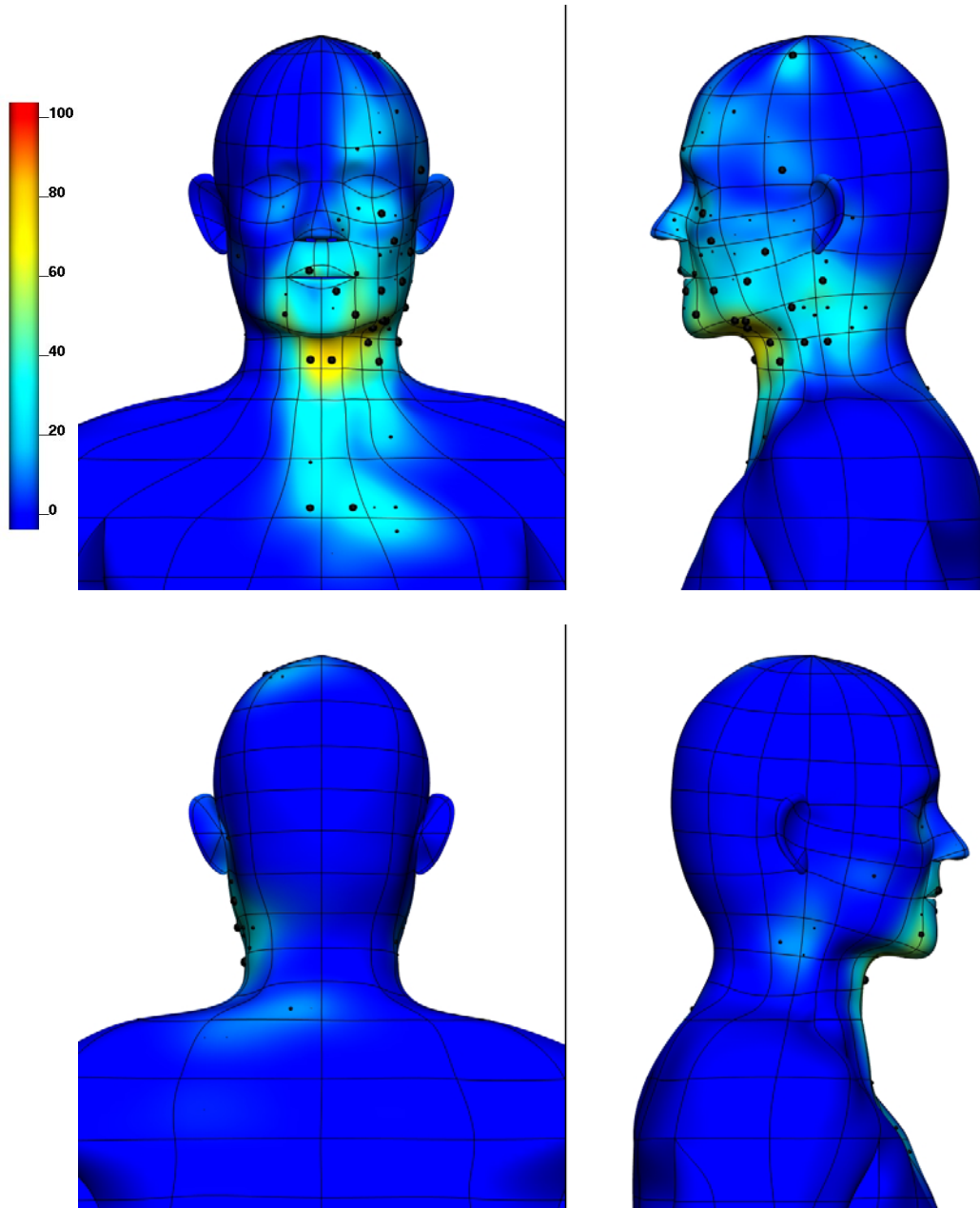
RANDXY PLOTS:



Cervical level III nodefields

Left cervical level III drainage (lc3):

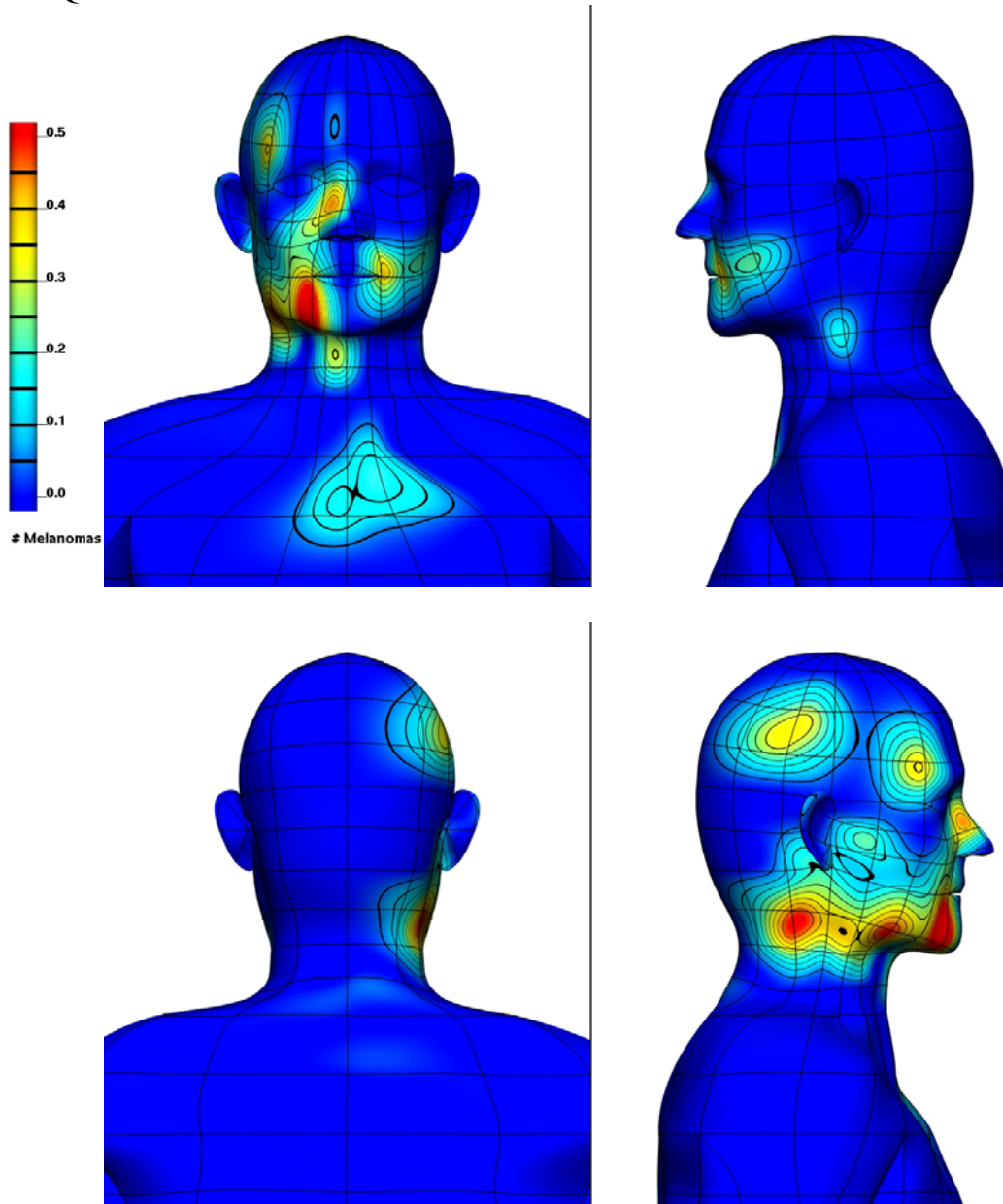
PERCENTAGE LIKELIHOOD PLOTS:



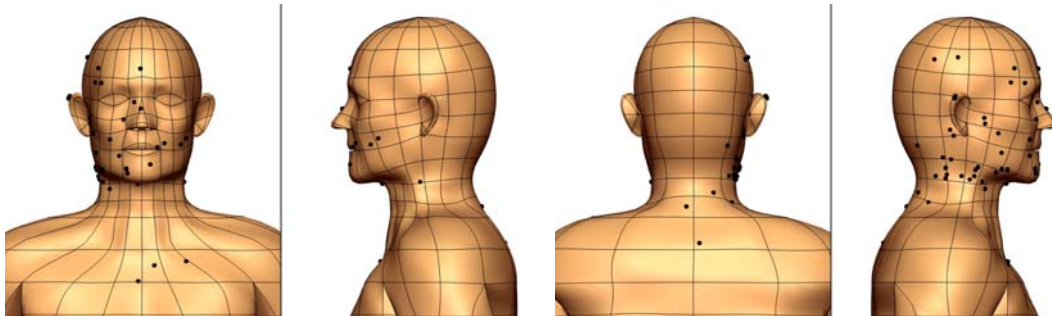
Cervical level III nodefields

Right cervical level III drainage (rc3):

FREQUENCY PLOTS:



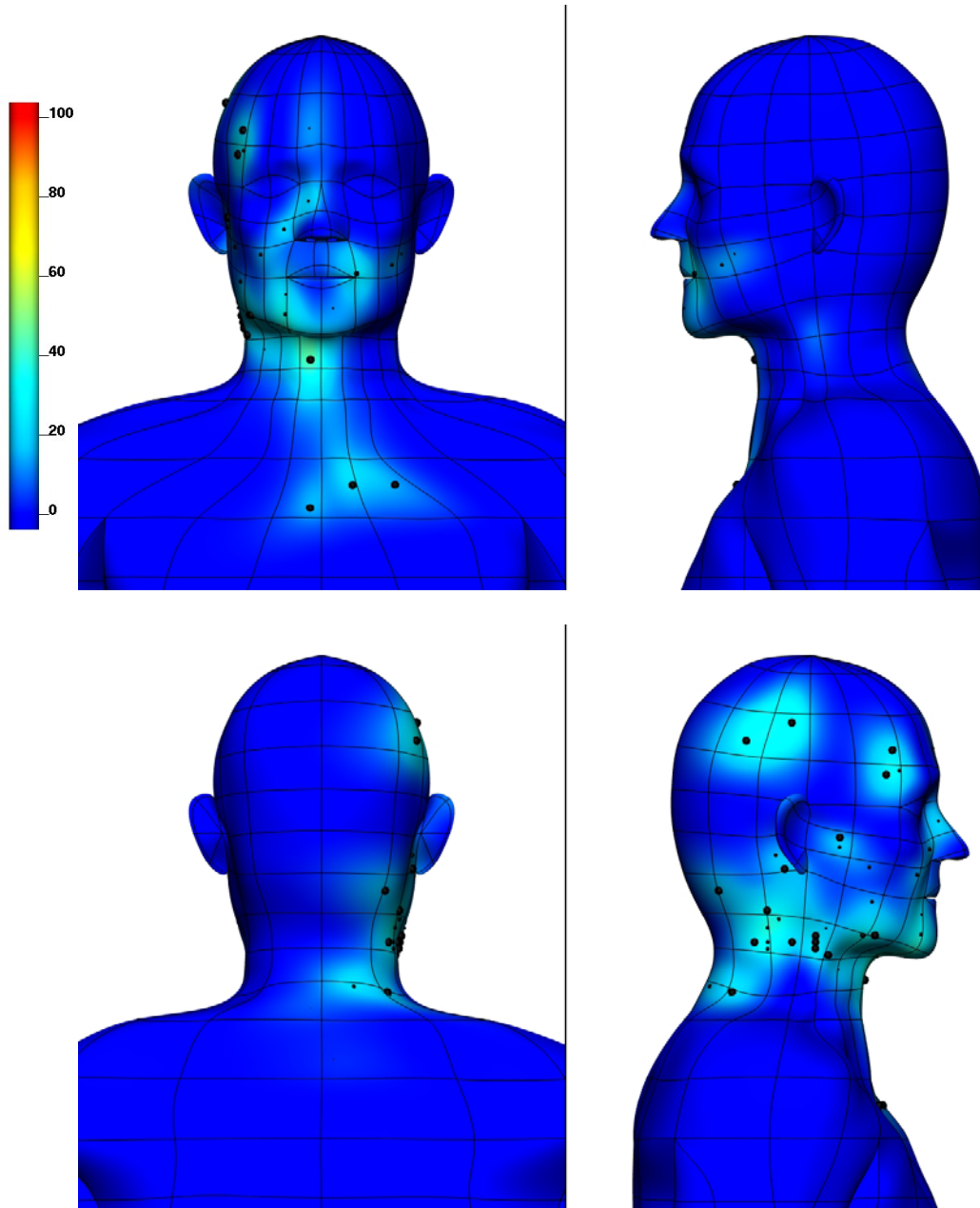
RANDXY PLOTS:



Cervical level III nodefields

Right cervical level III drainage (rc3):

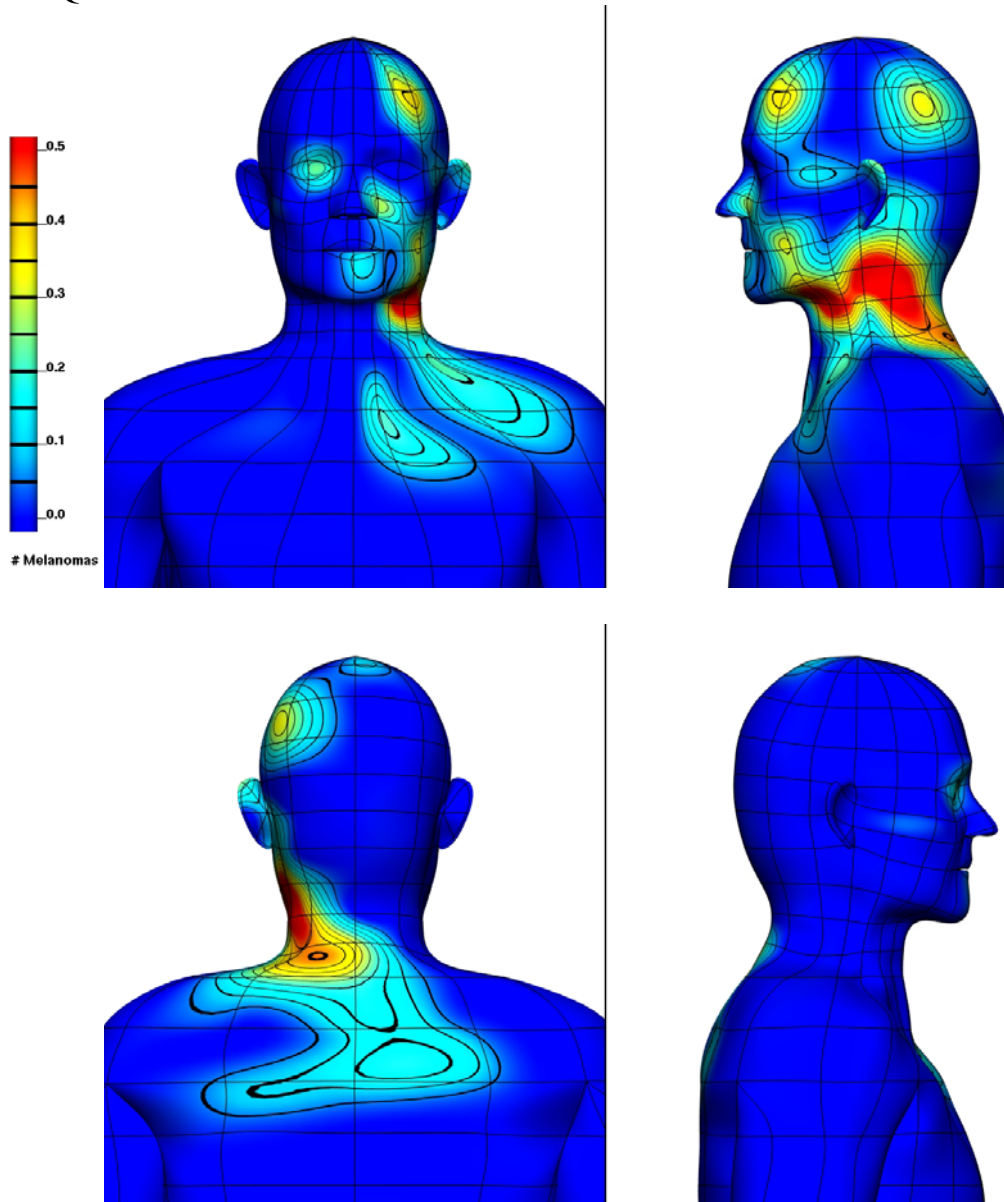
PERCENTAGE LIKELIHOOD PLOTS:



Cervical level IV nodefields

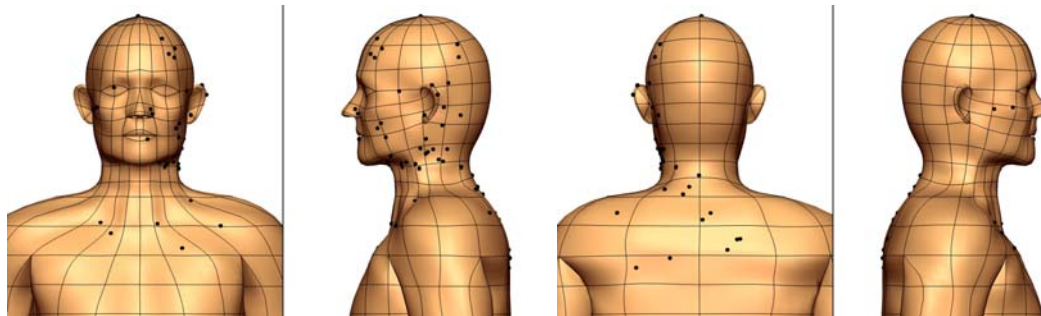
Left cervical level IV drainage (lc4):

FREQUENCY PLOTS:



Some sites are located on the back, but difficult to see – especially on the normalised plot since they have very small likelihoods.

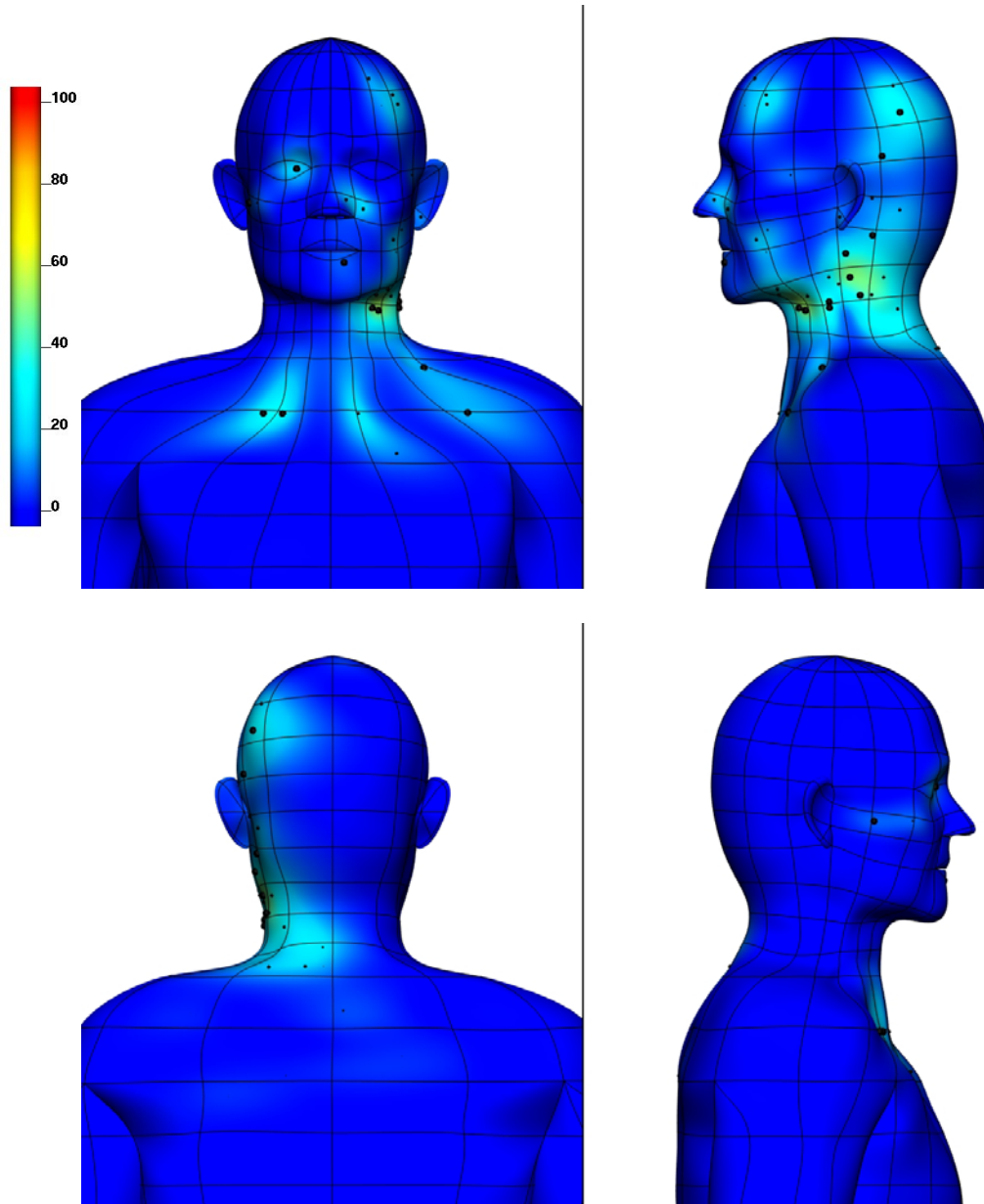
RANDXY PLOTS:



Cervical level IV nodefields

Left cervical level IV drainage (lc4):

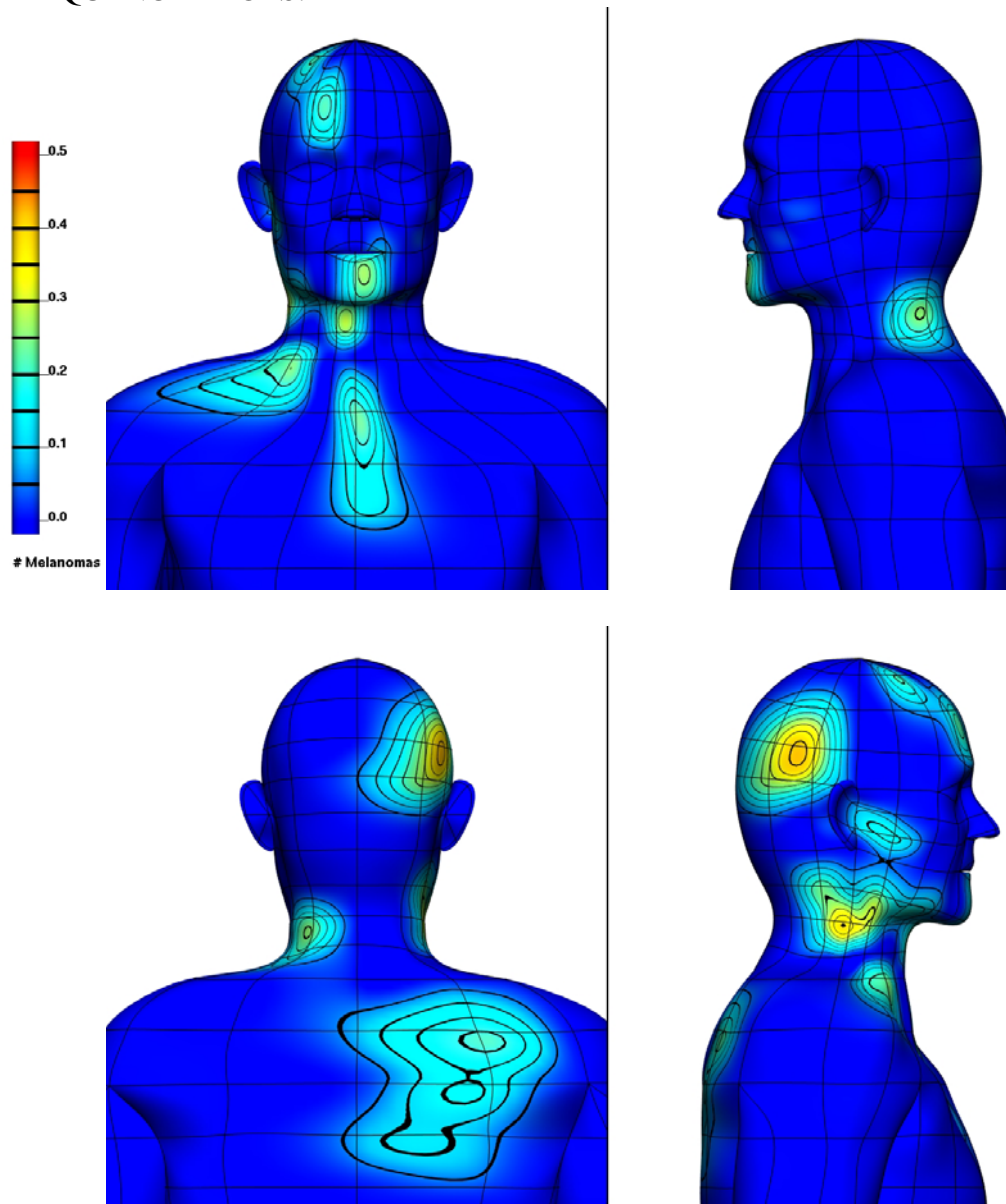
PERCENTAGE LIKELIHOOD PLOTS:



Cervical level IV nodefields

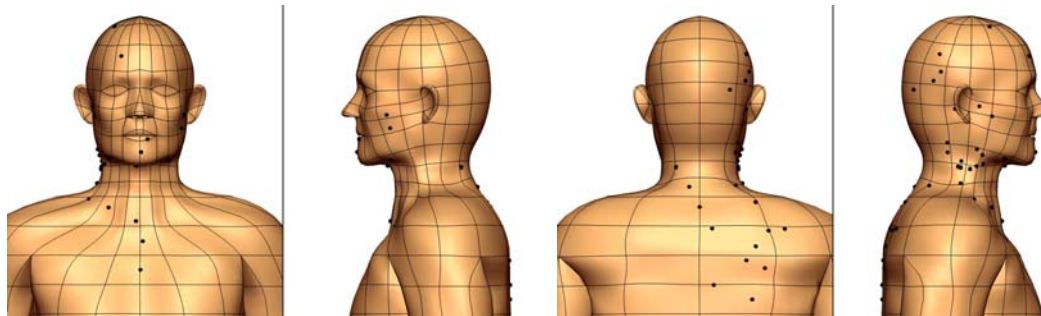
Right cervical level IV drainage (rc4):

FREQUENCY PLOTS:



Some sites are located on the back, but difficult to see – especially on the normalised plot since they have very small likelihoods.

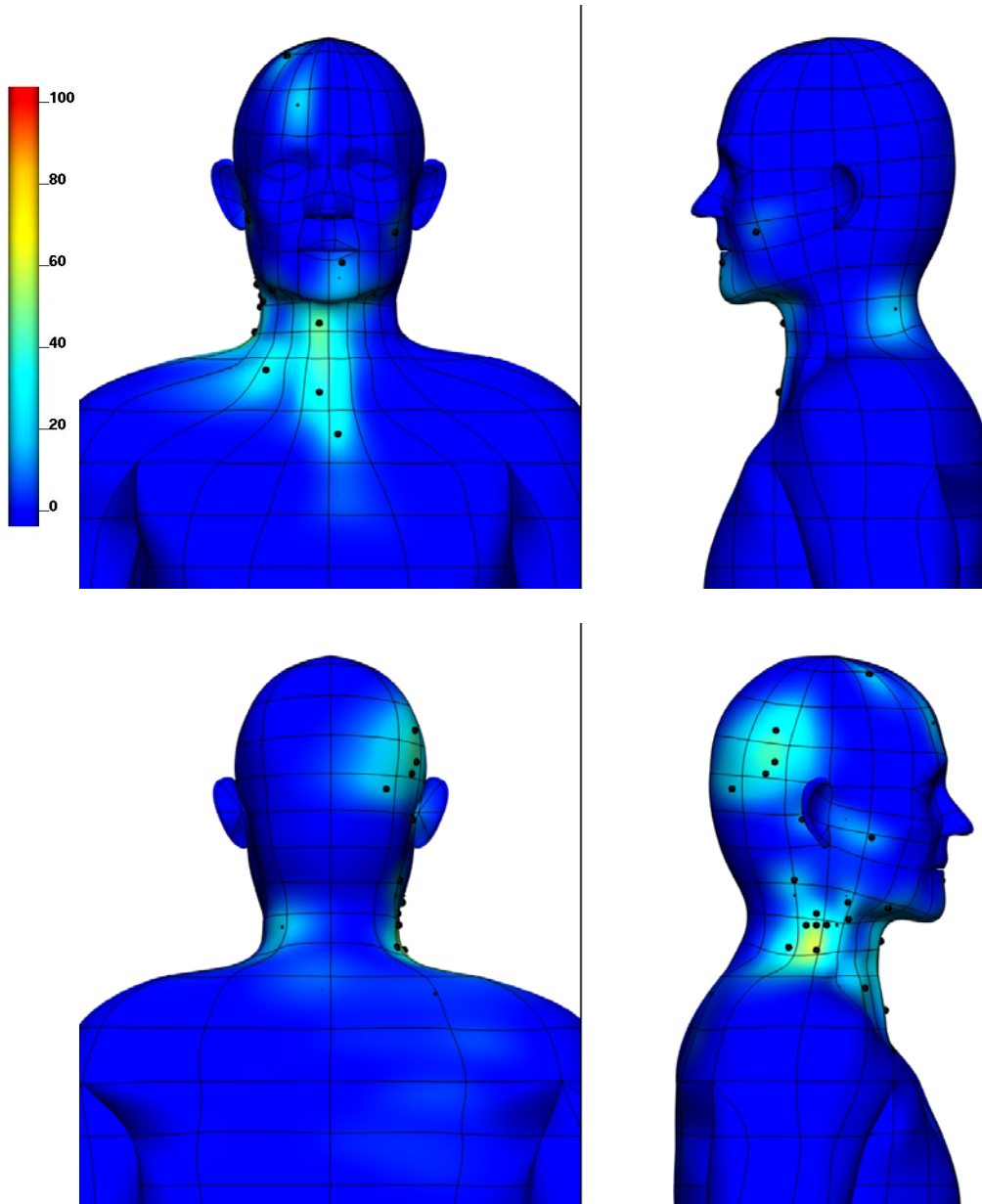
RANDXY PLOTS:



Cervical level IV nodefields

Right cervical level IV drainage (rc4):

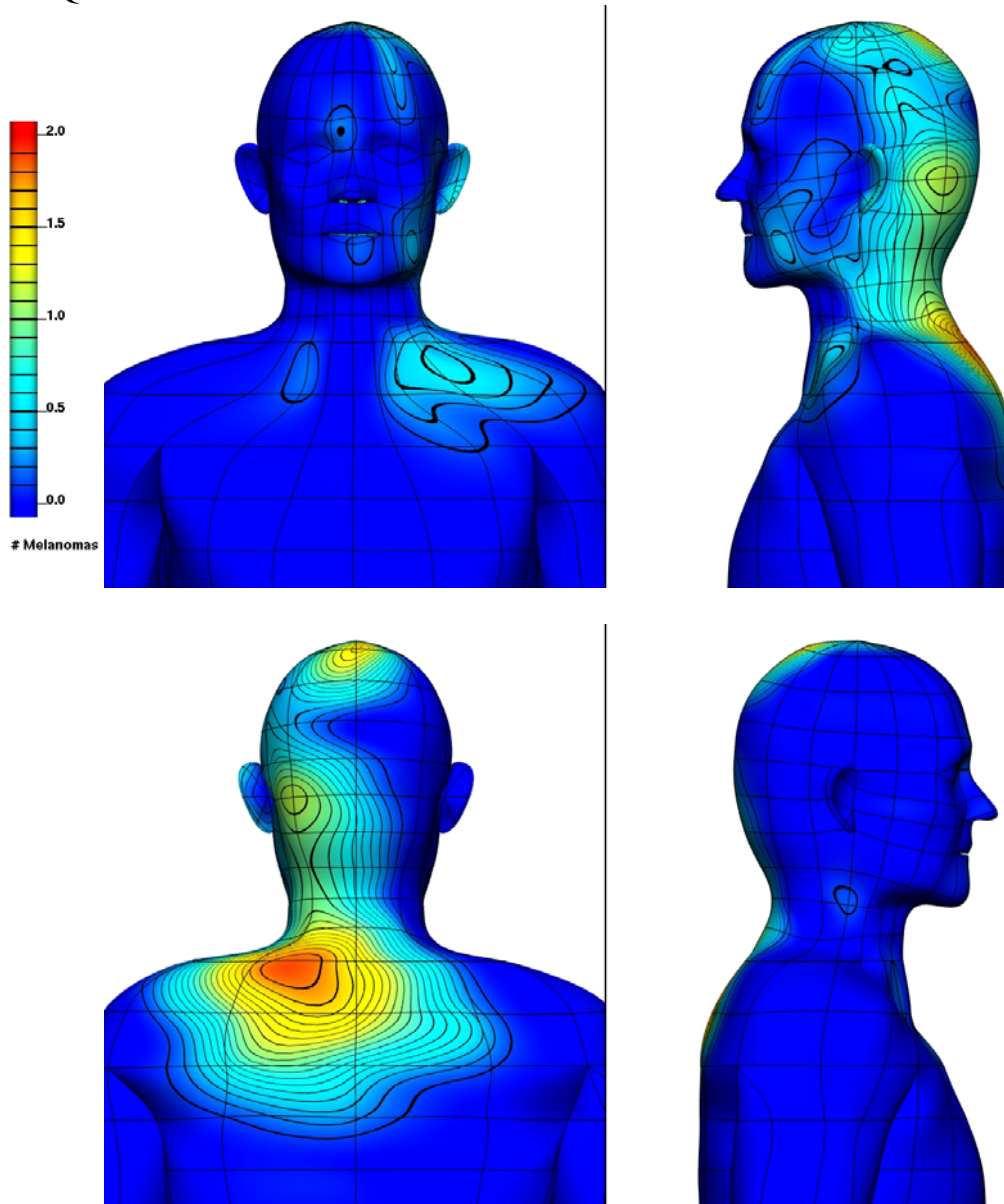
PERCENTAGE LIKELIHOOD PLOTS:



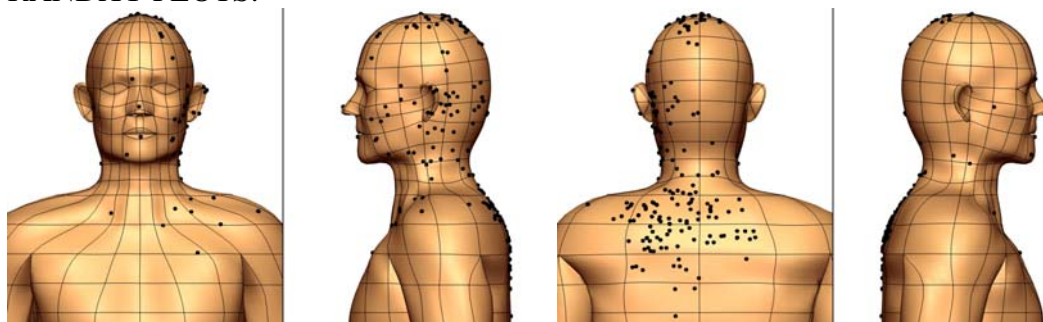
Cervical level V nodefields

Left cervical level V drainage (lc5):

FREQUENCY PLOTS:



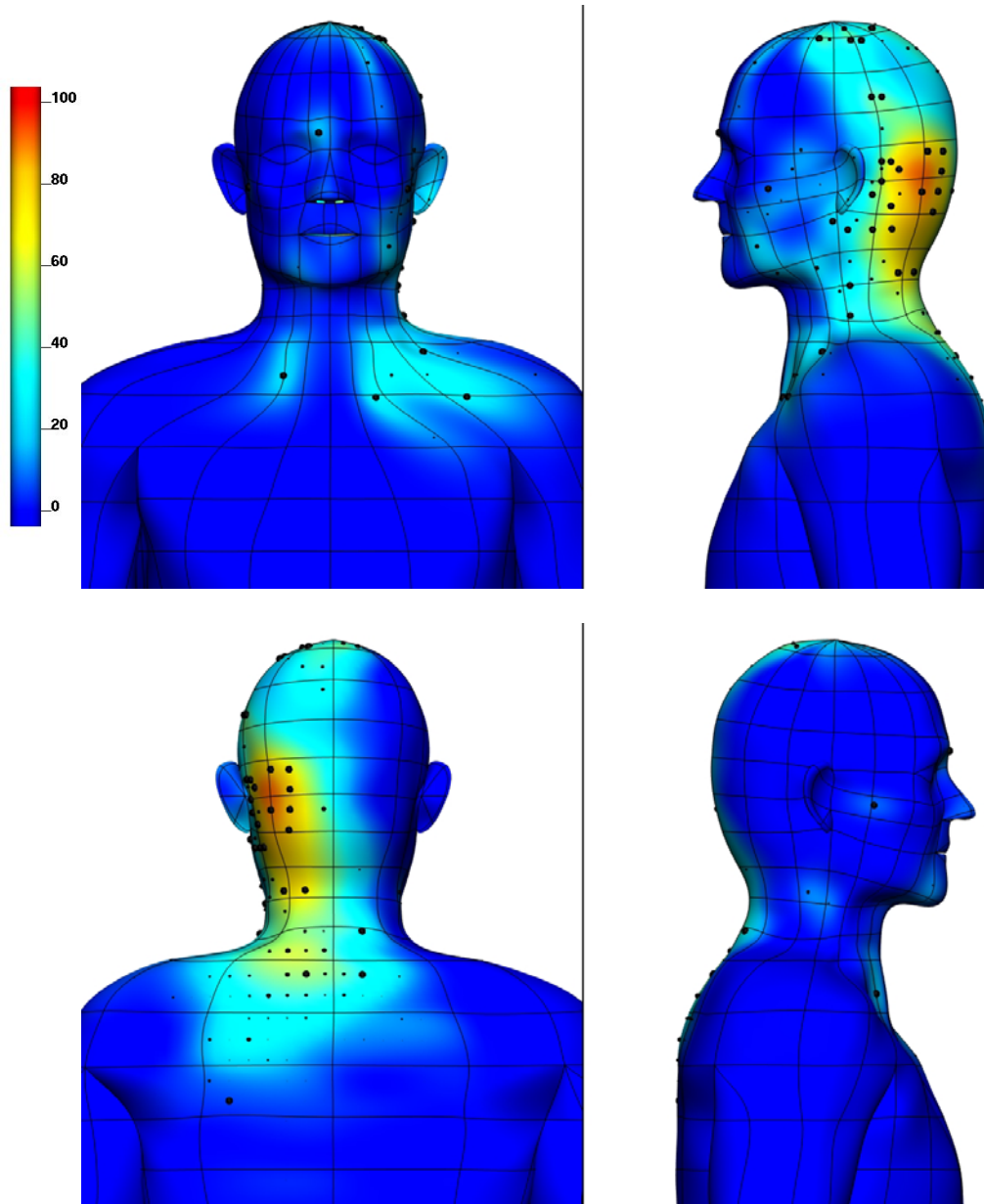
RANDXY PLOTS:



Cervical level V nodefields

Left cervical level V drainage (lc5):

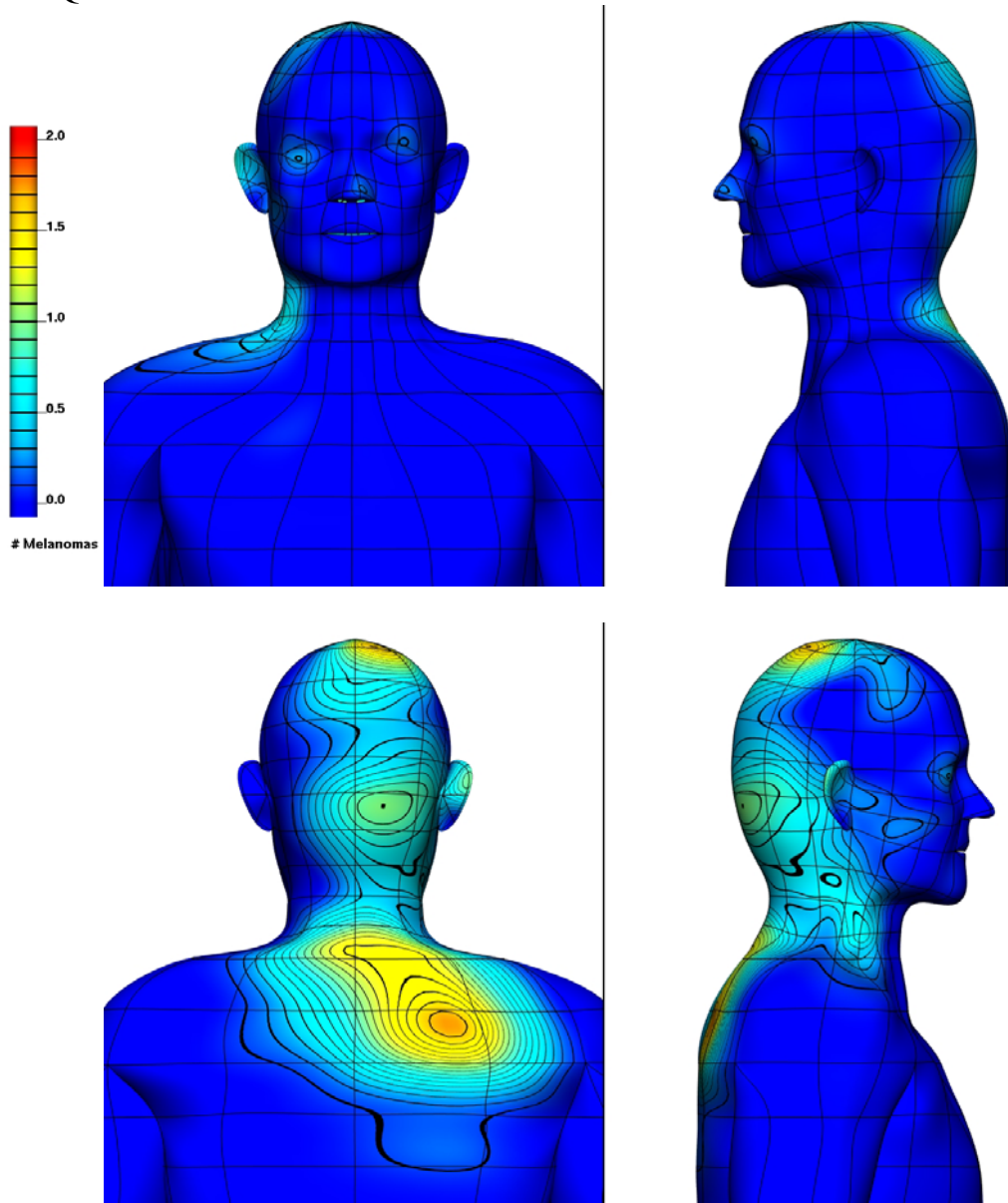
PERCENTAGE LIKELIHOOD PLOTS:



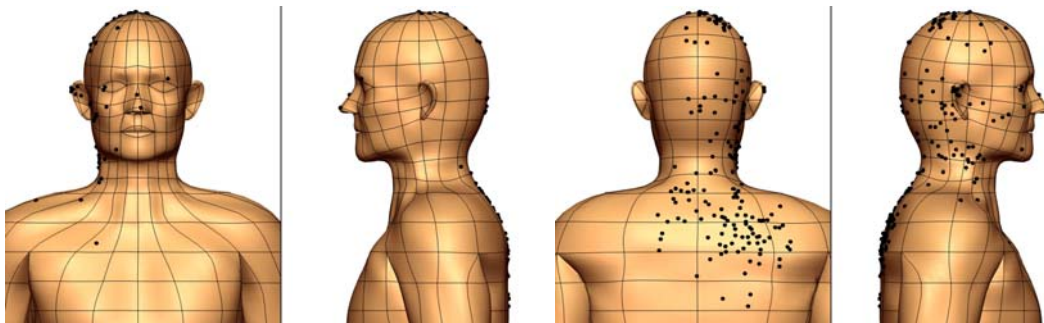
Cervical level V nodefields

Right cervical level V drainage (rc5):

FREQUENCY PLOTS:



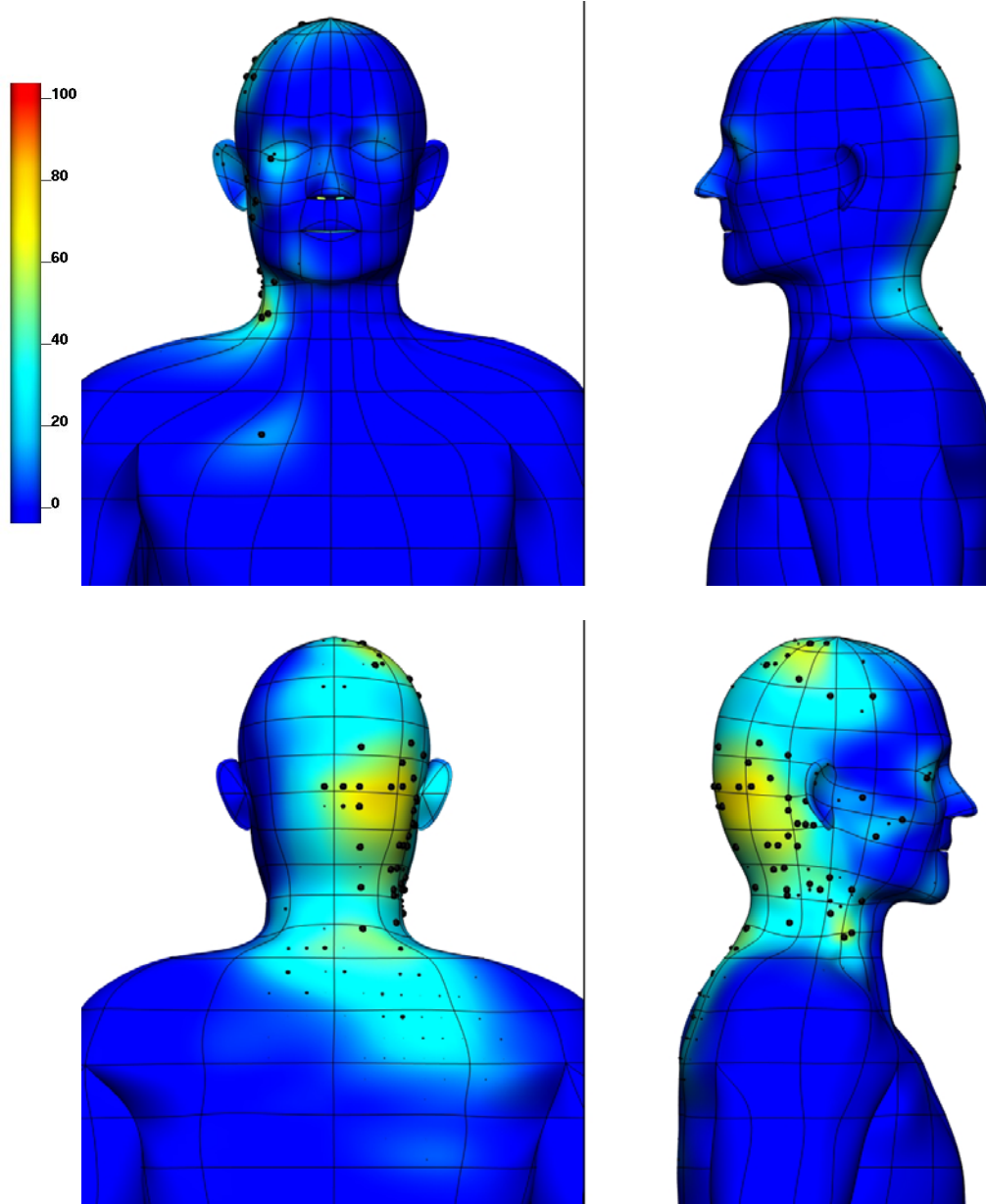
RANDXY PLOTS:



Cervical level V nodefields

Right cervical level V drainage (rc5):

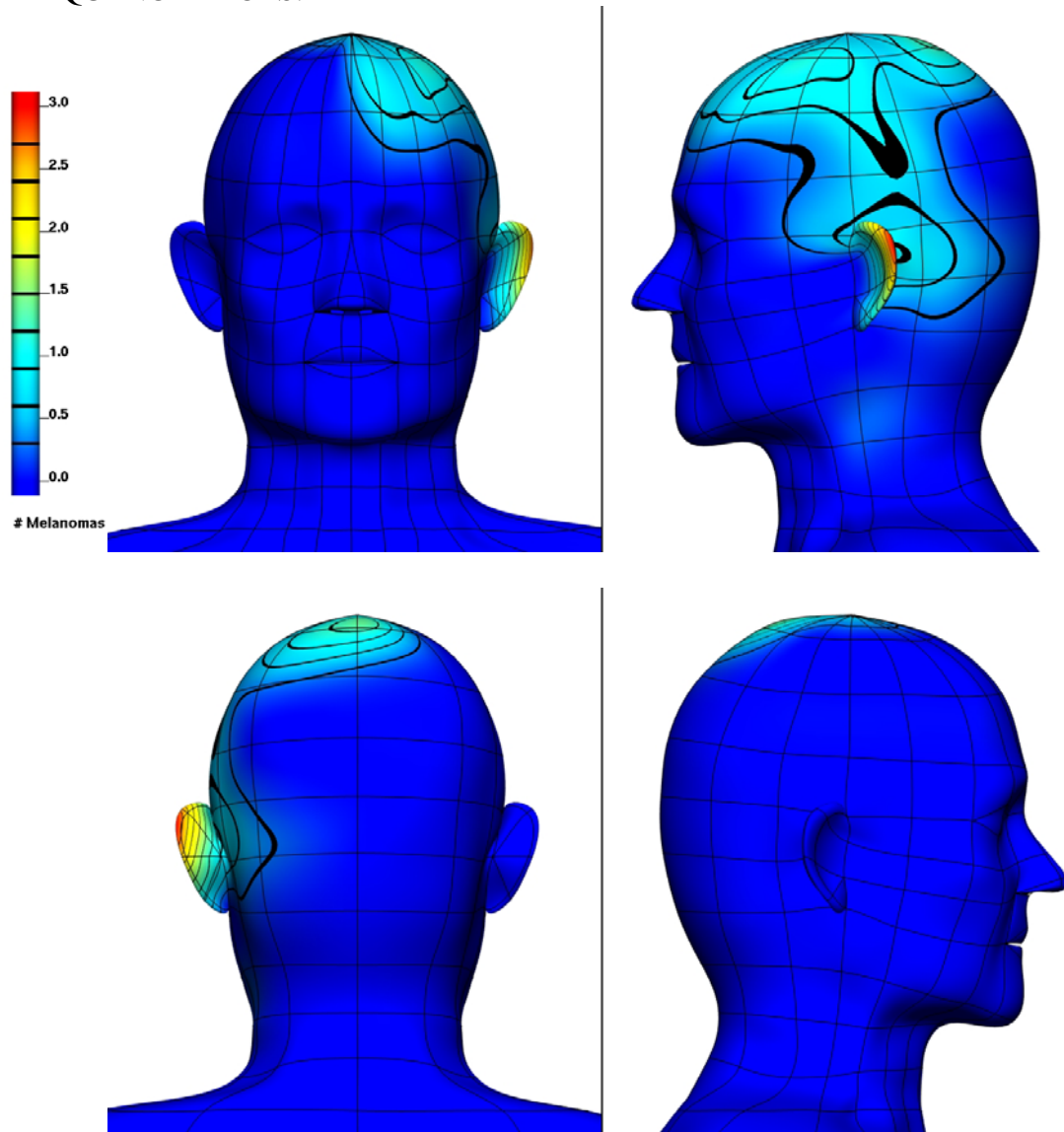
PERCENTAGE LIKELIHOOD PLOTS:



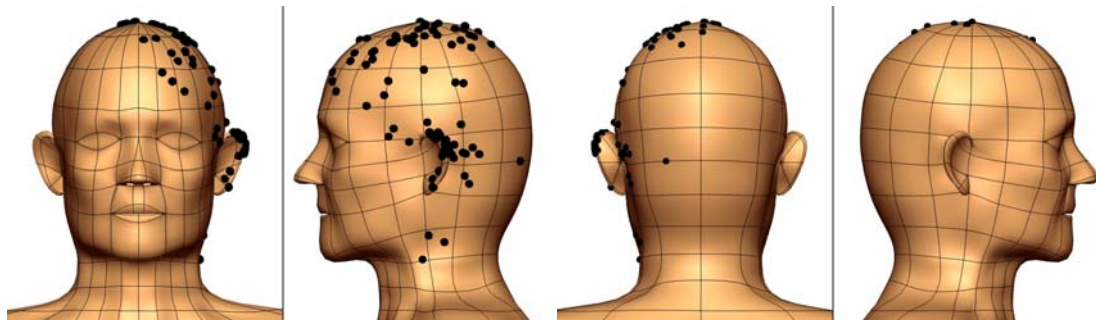
Postauricular nodefields

Left postauricular drainage (lposta):

FREQUENCY PLOTS:



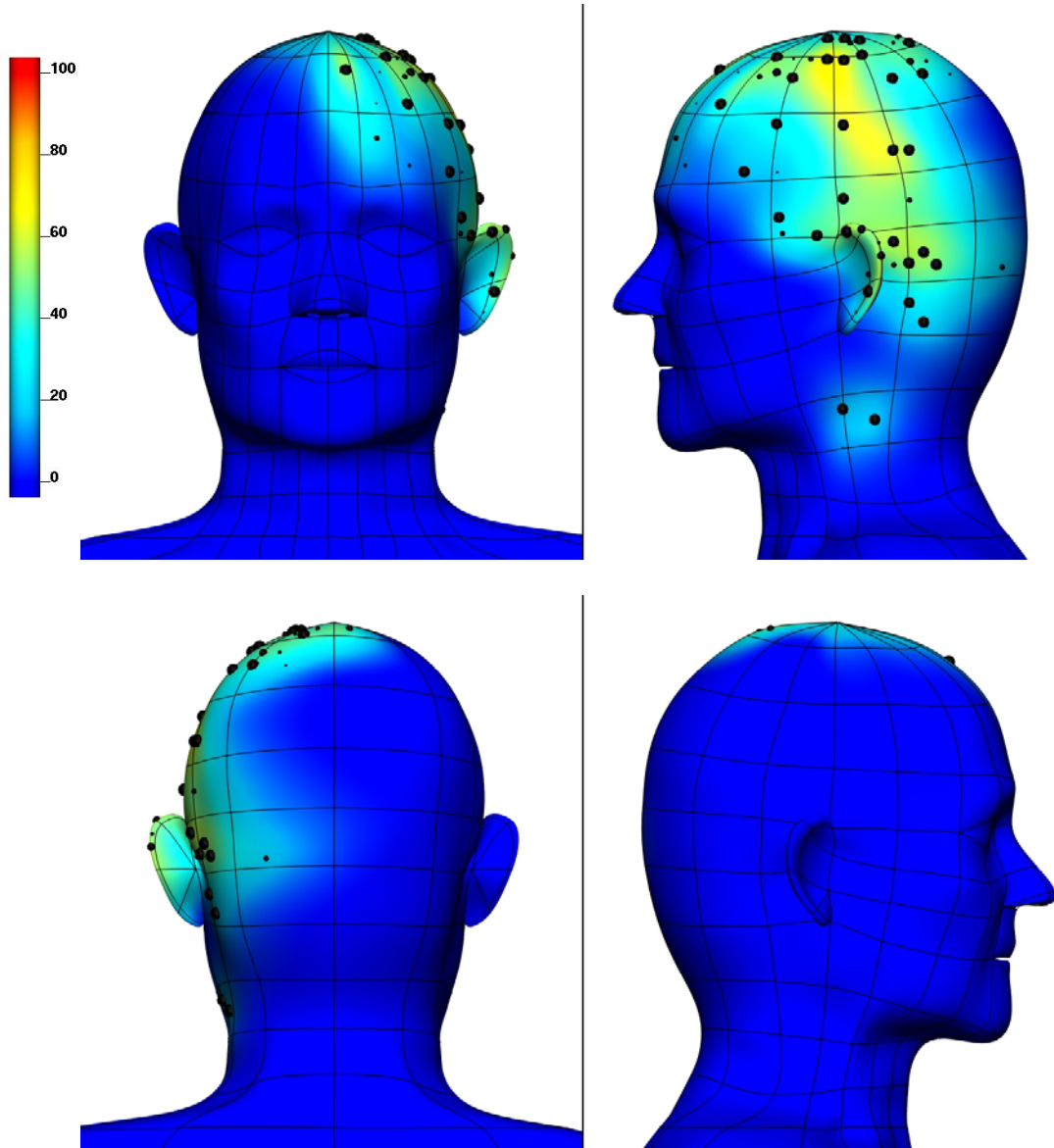
RANDXY PLOTS:



Postauricular nodefields

Left postauricular drainage (lpost):

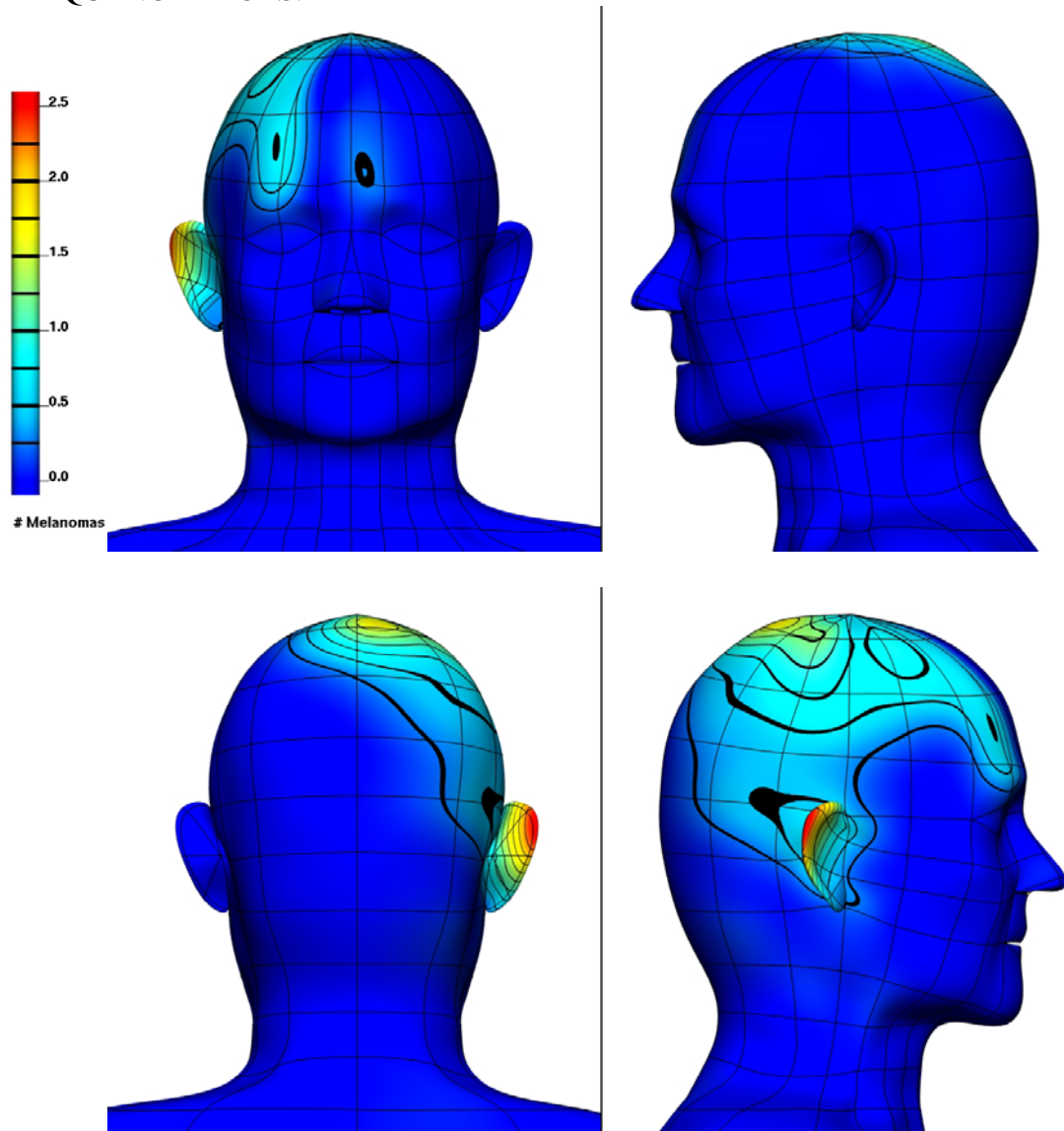
PERCENTAGE LIKELIHOOD PLOTS:



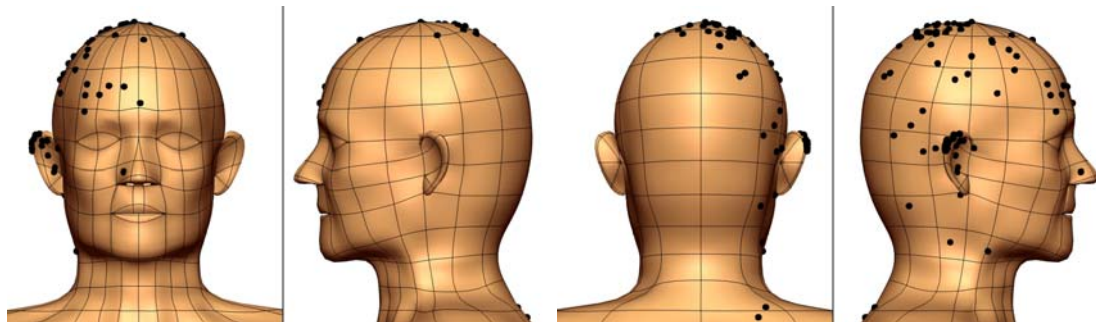
Postauricular nodefields

Right postauricular drainage (rposta):

FREQUENCY PLOTS:



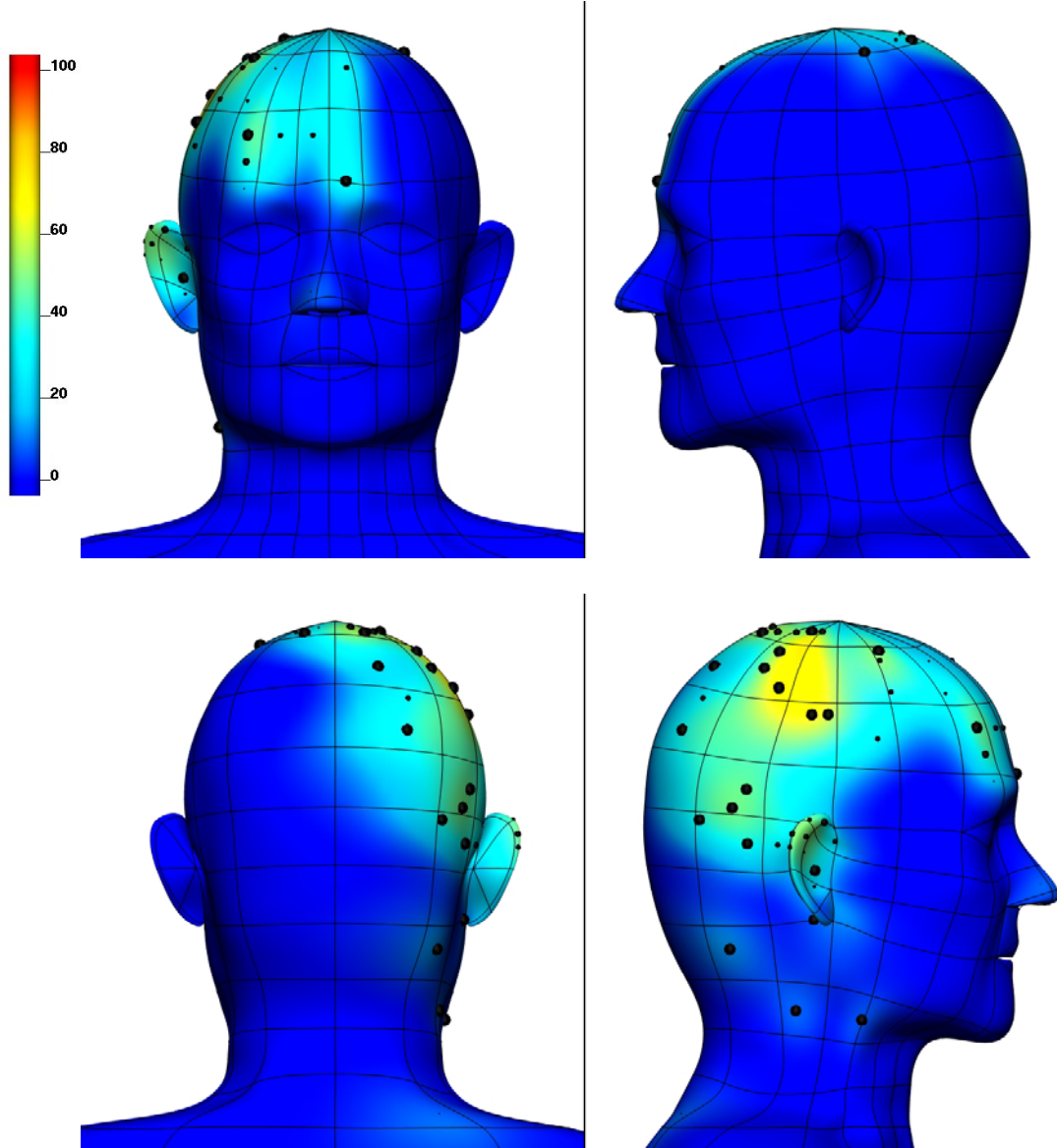
RANDXY PLOTS:



Postauricular nodefields

Right postauricular drainage (rposta):

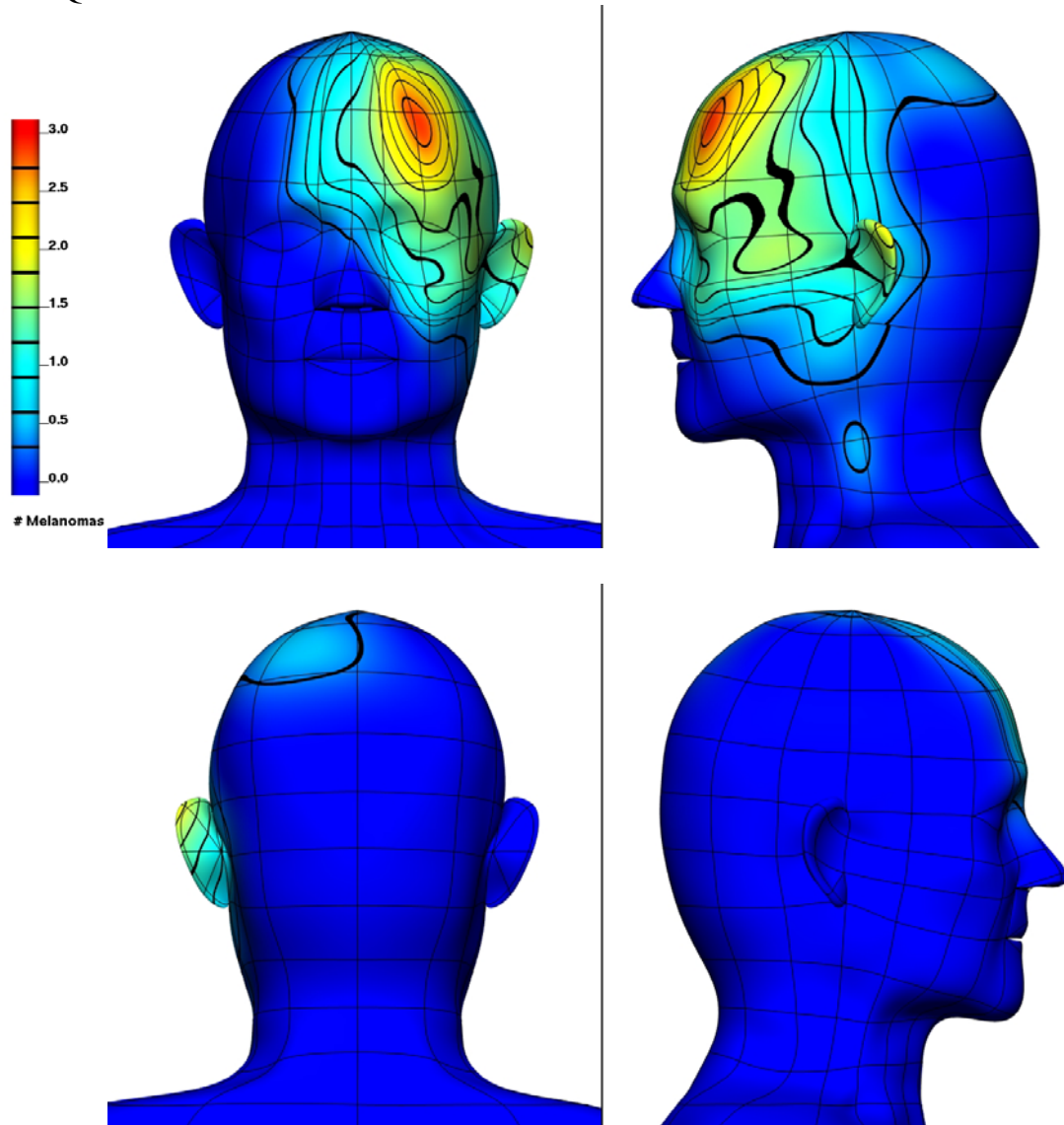
PERCENTAGE LIKELIHOOD PLOTS:



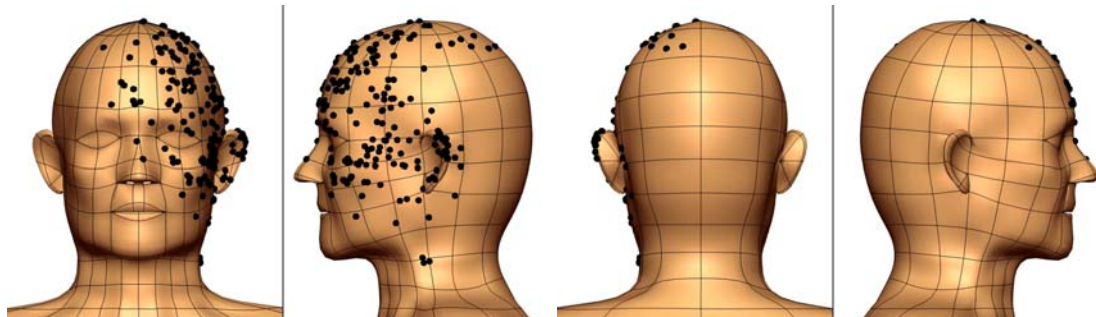
Preauricular nodefields

Left preauricular drainage (lprea):

FREQUENCY PLOTS:



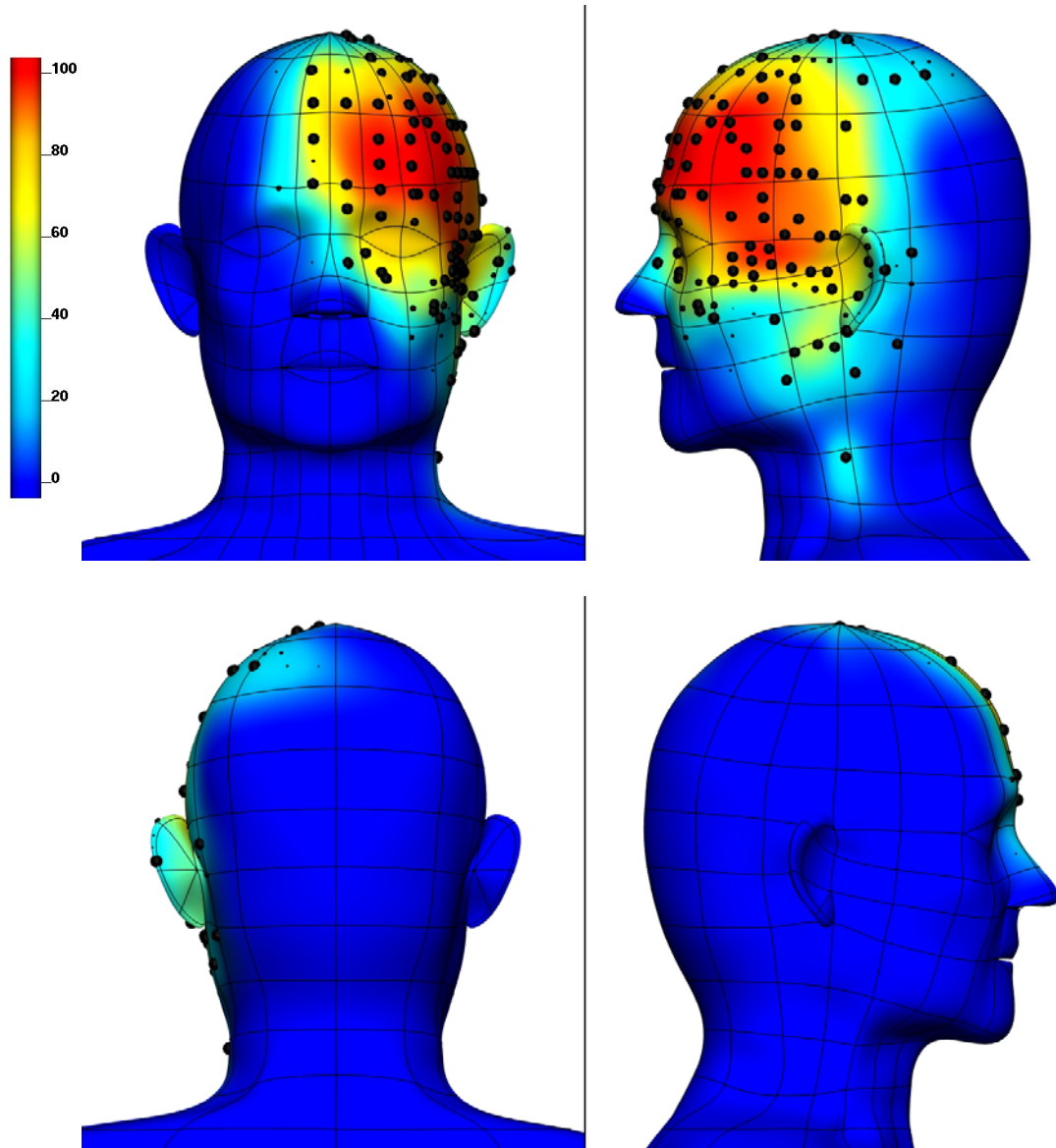
RANDXY PLOTS:



Preauricular nodefields

Left preauricular drainage (lprea):

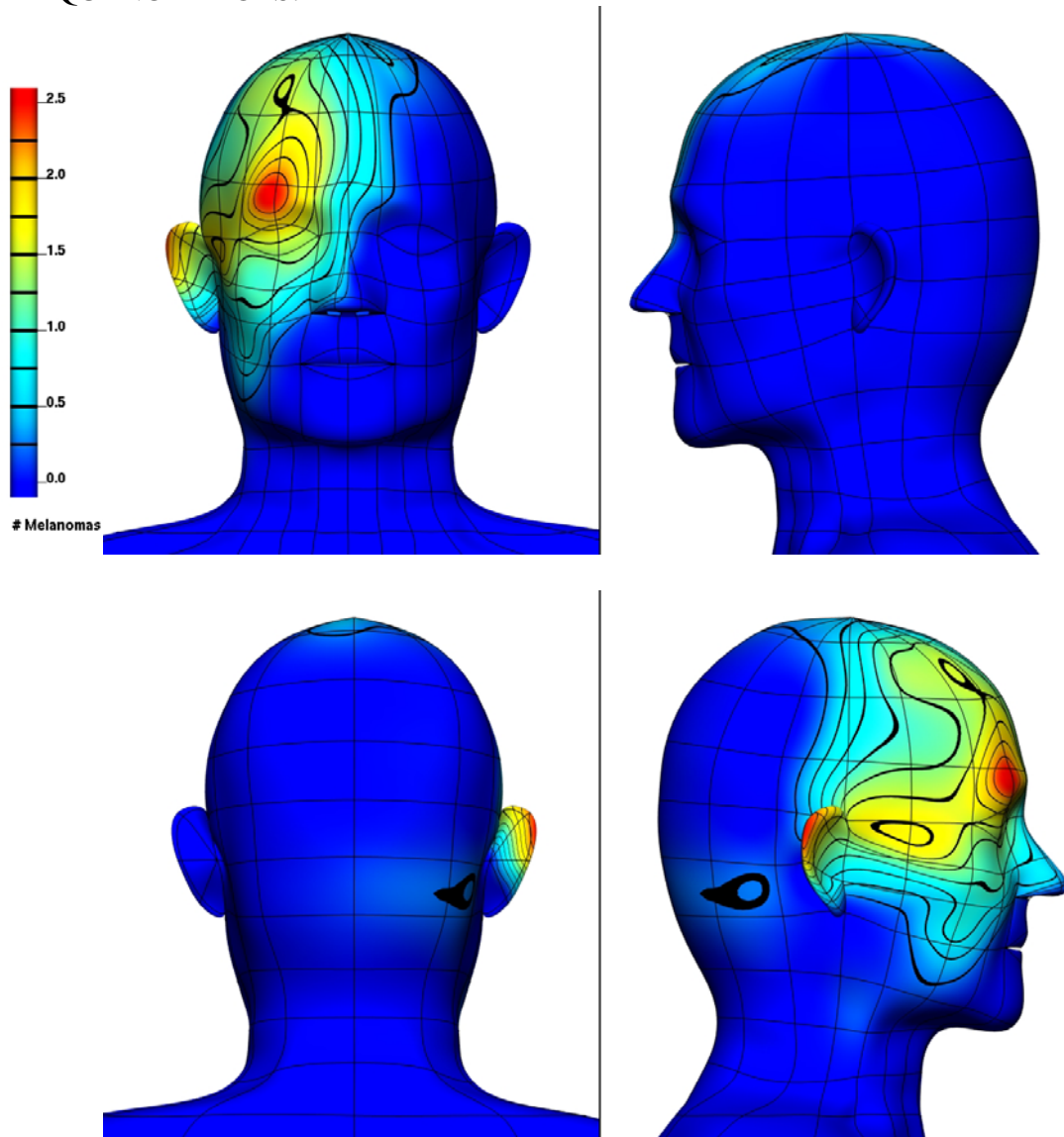
PERCENTAGE LIKELIHOOD PLOTS:



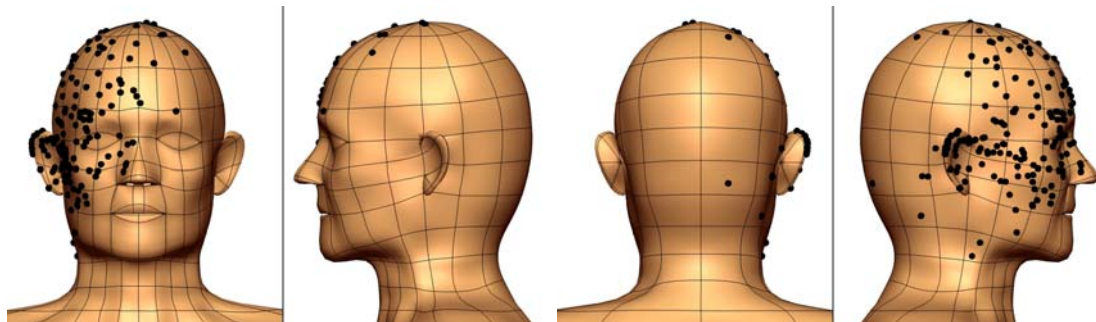
Preauricular nodefields

Right preauricular drainage (rprea):

FREQUENCY PLOTS:



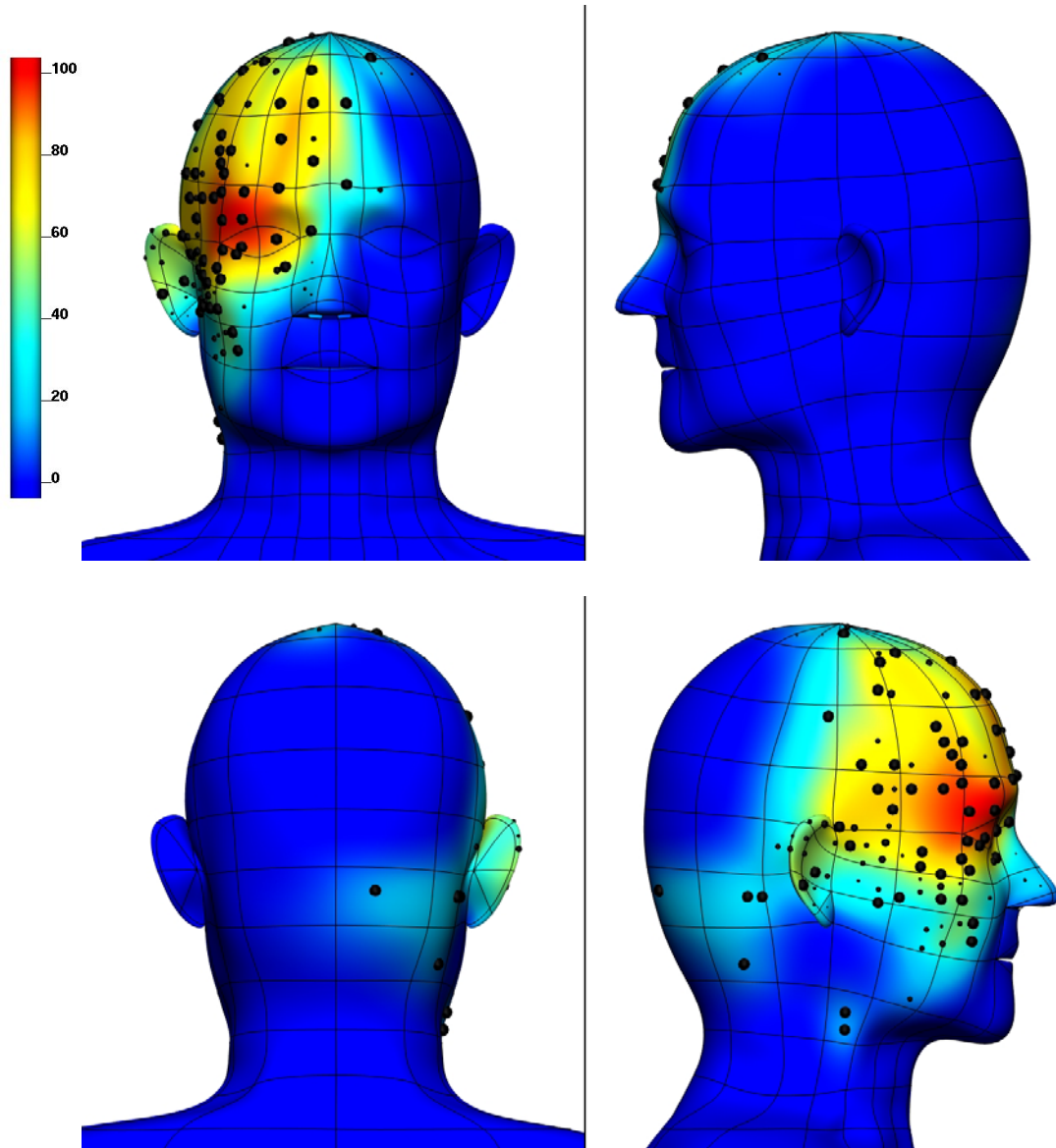
RANDXY PLOTS:



Preauricular nodefields

Right preauricular drainage (rprea):

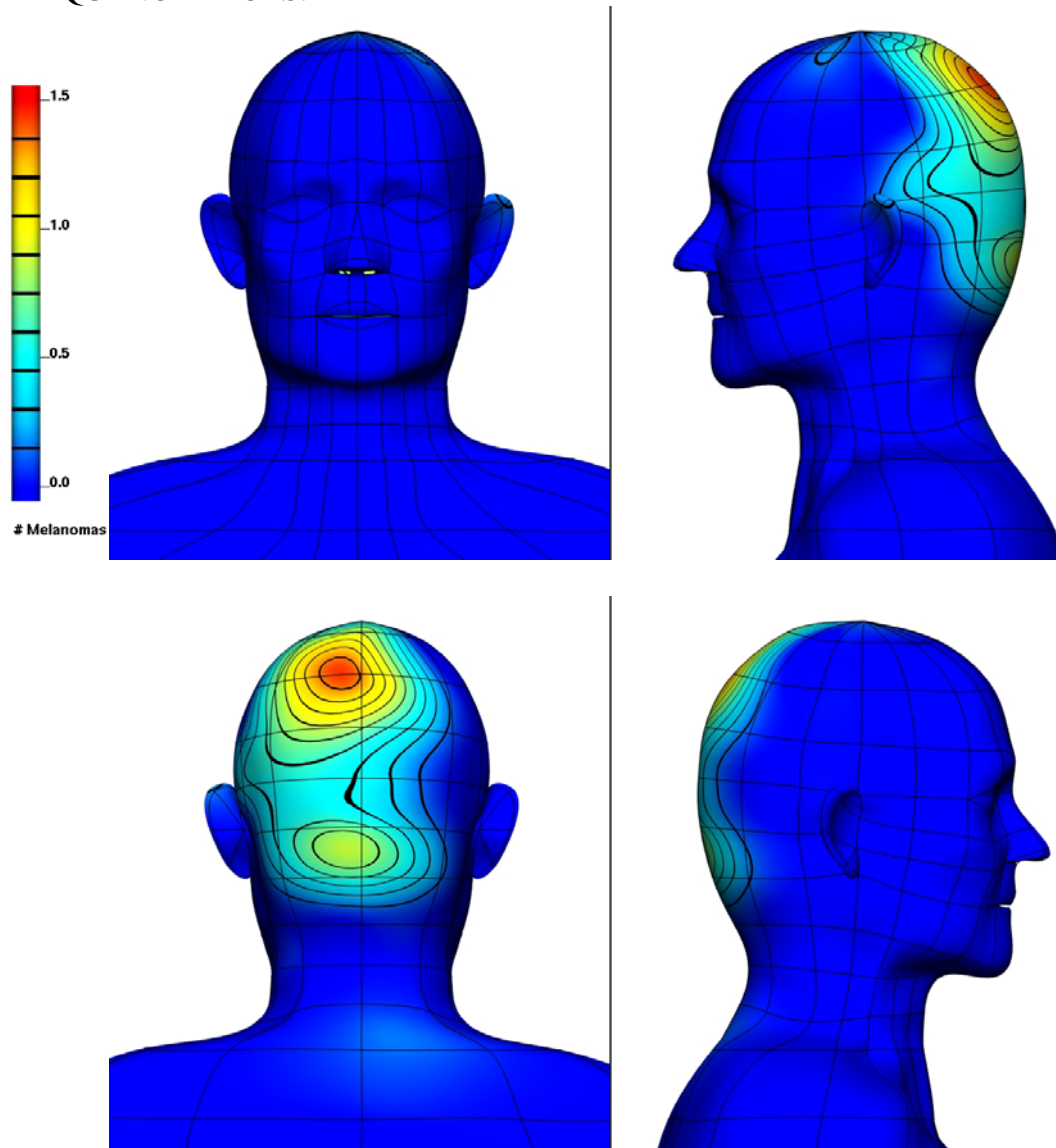
PERCENTAGE LIKELIHOOD PLOTS:



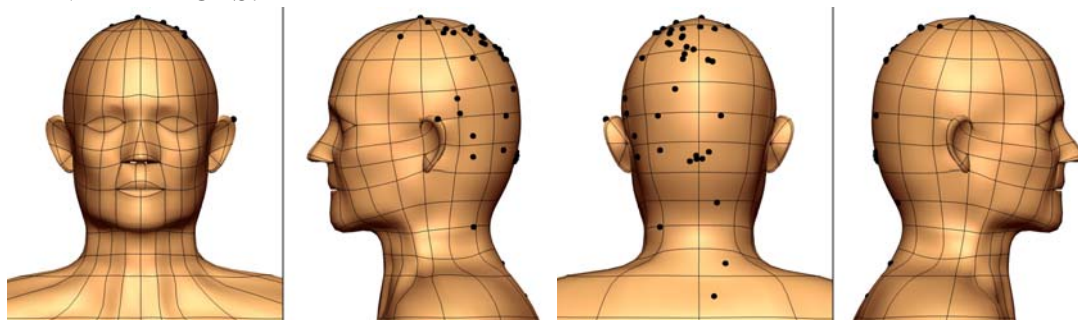
Occipital nodefields

Left occipital drainage (lo):

FREQUENCY PLOTS:



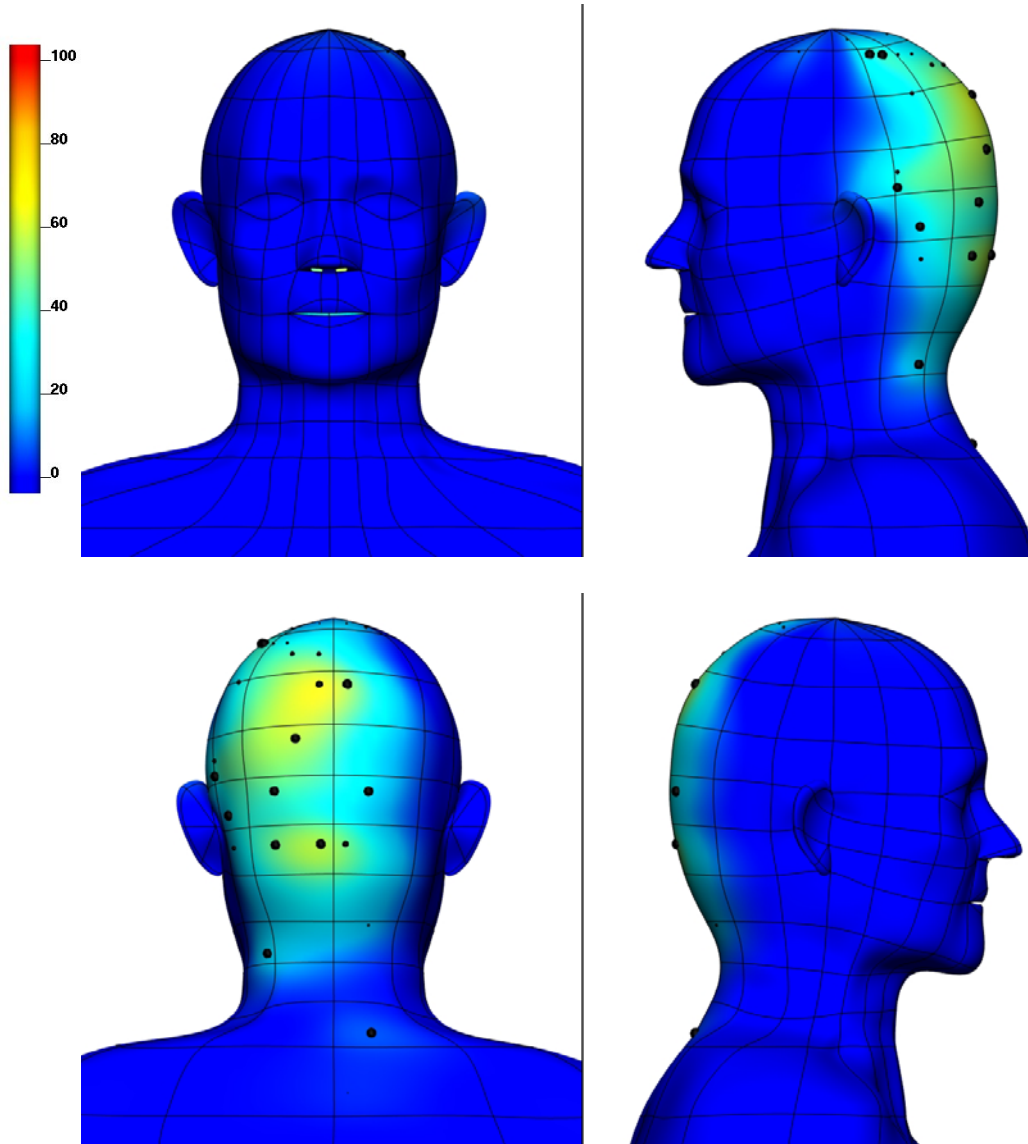
RANDXY PLOTS:



Occipital nodefields

Left occipital drainage (lo):

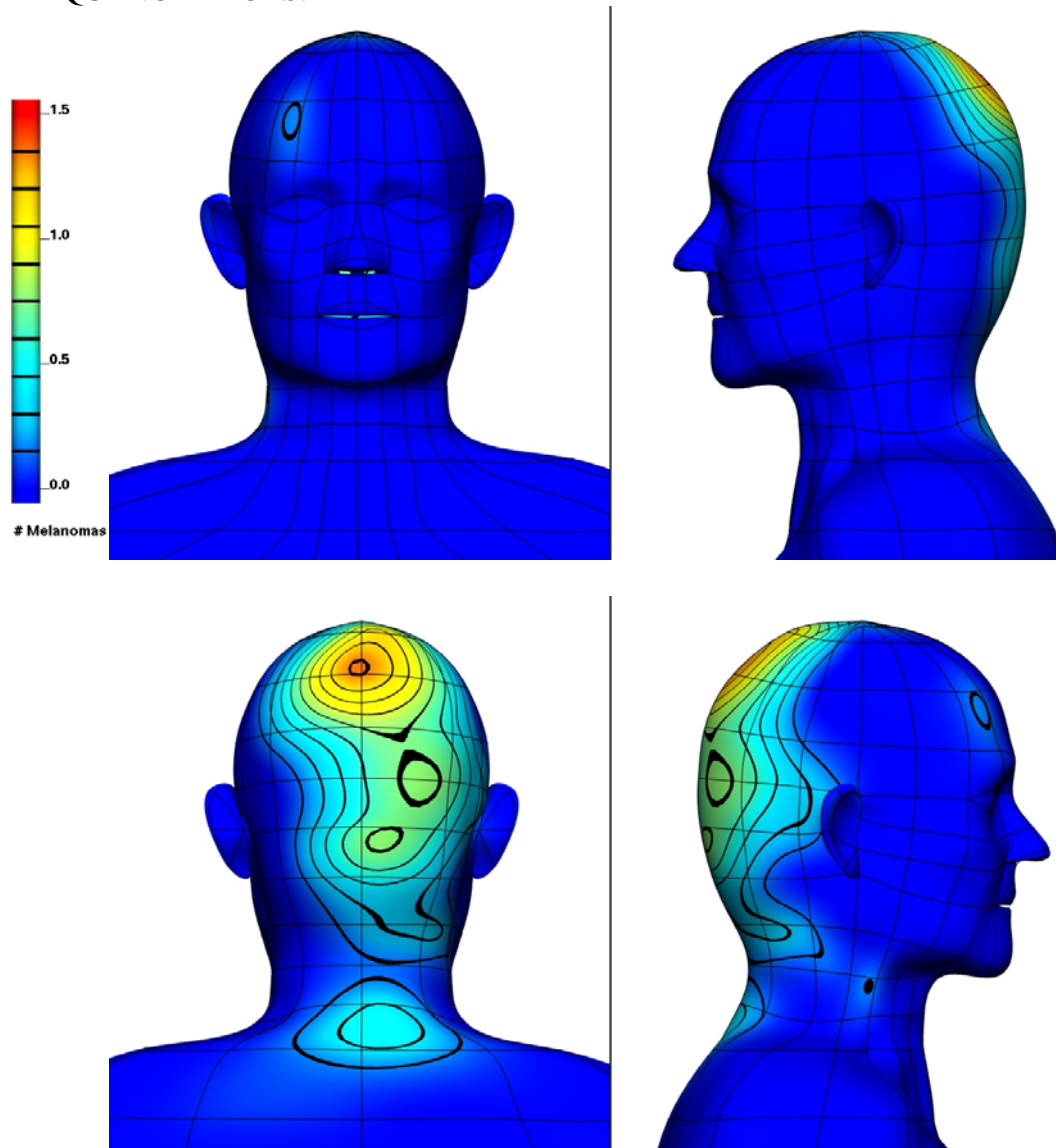
PERCENTAGE LIKELIHOOD PLOTS:



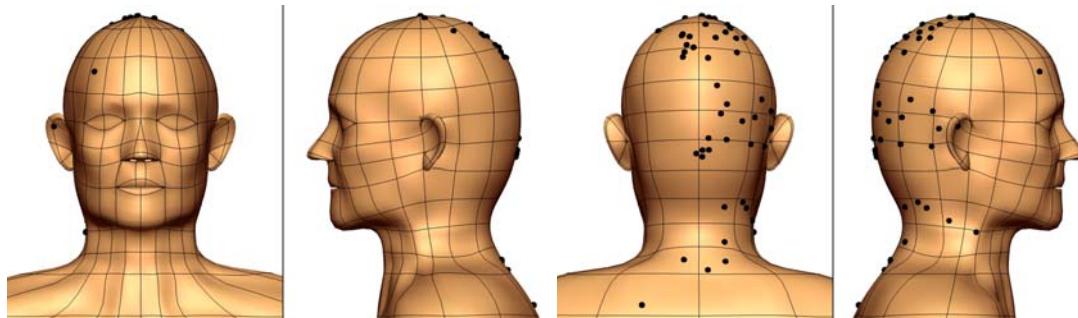
Occipital nodefields

Right occipital drainage (ro):

FREQUENCY PLOTS:



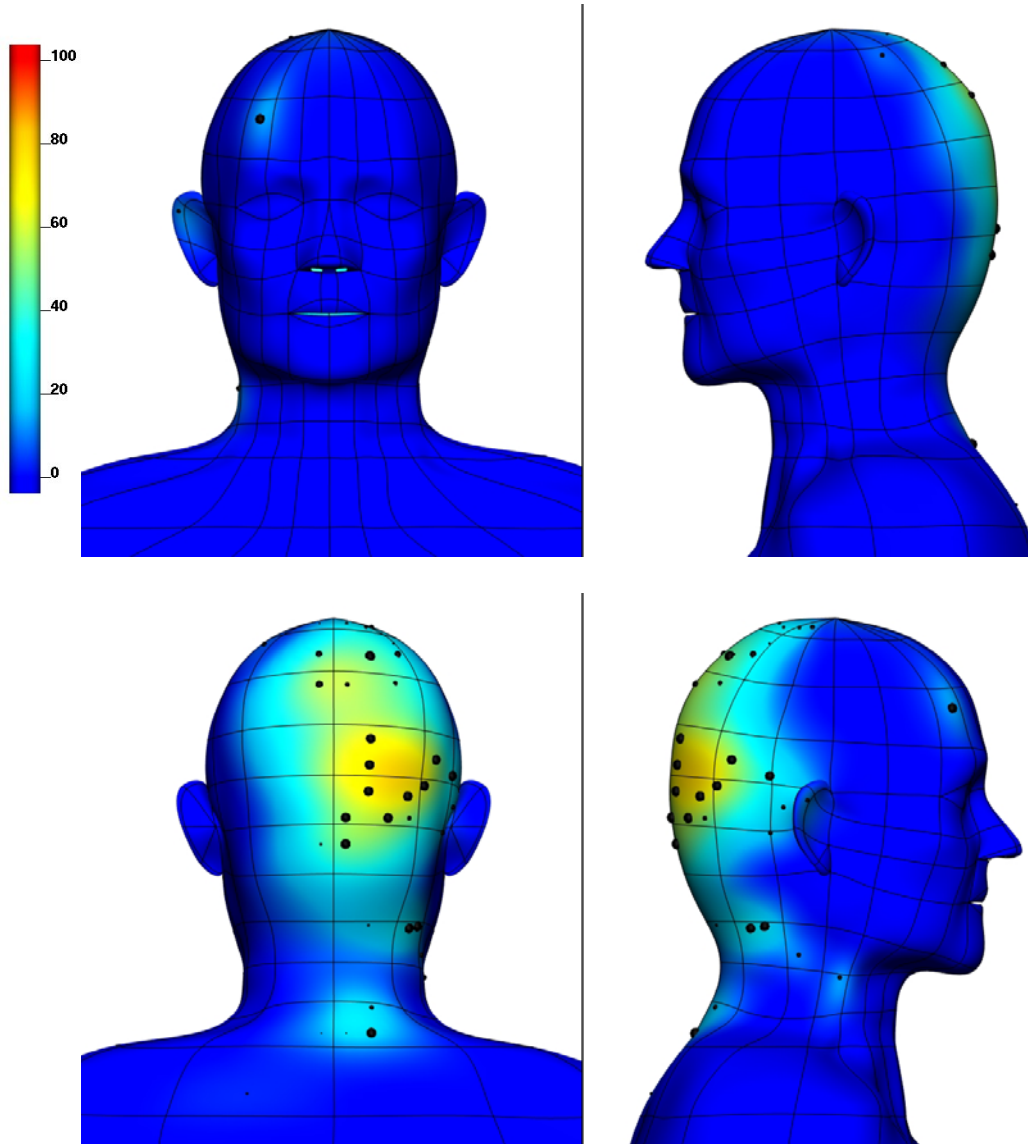
RANDXY PLOTS:



Occipital nodefields

Right occipital drainage (ro):

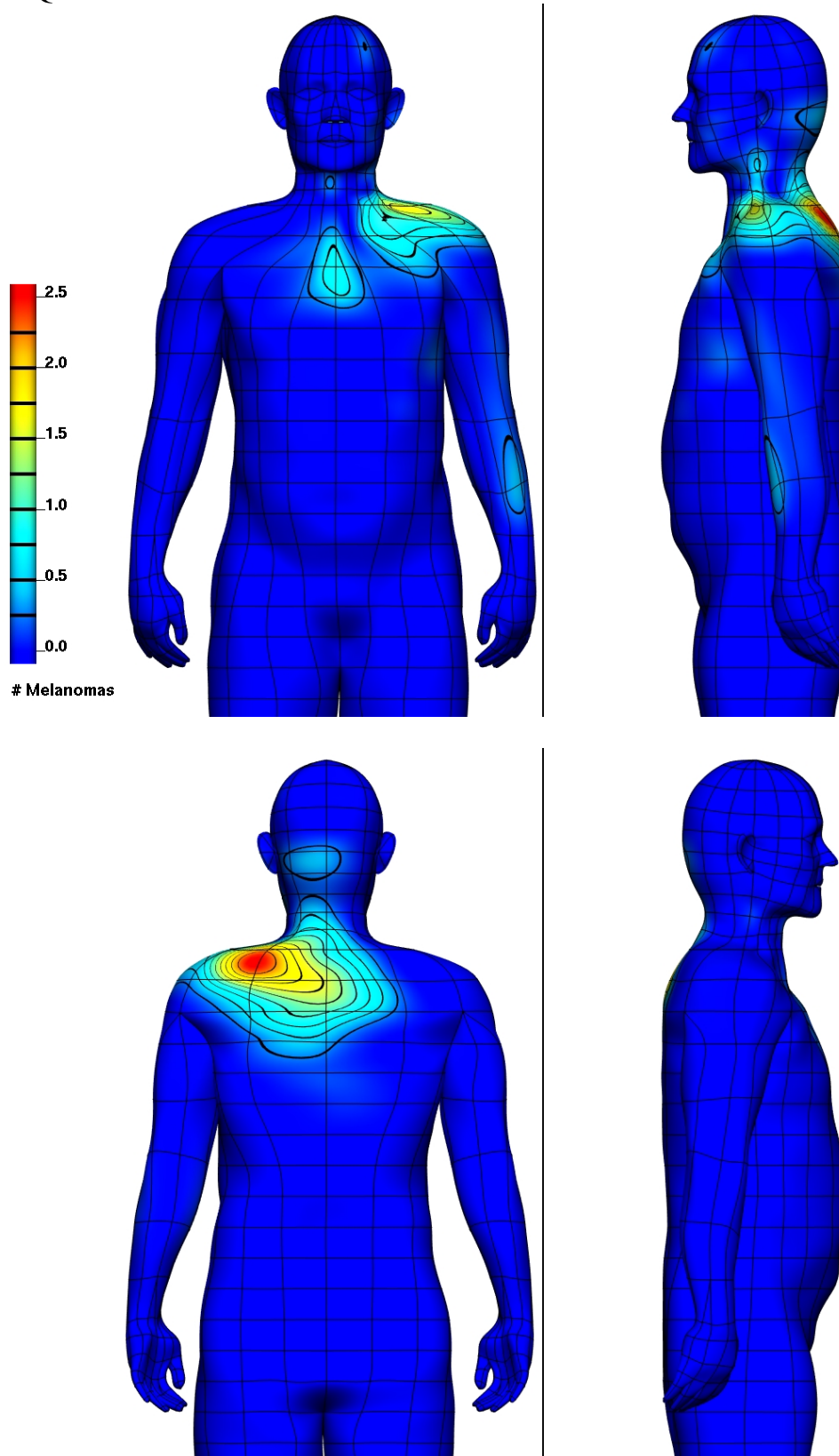
PERCENTAGE LIKELIHOOD PLOTS:



Supraclavicular fossa nodefields

Left supraclavicular fossa drainage (Isc):

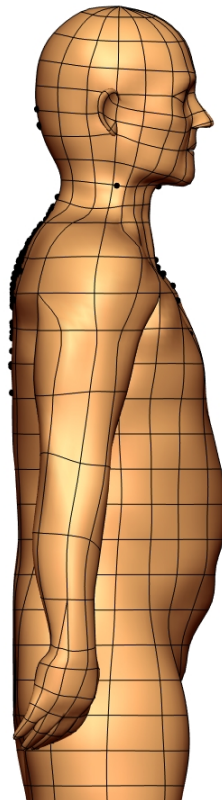
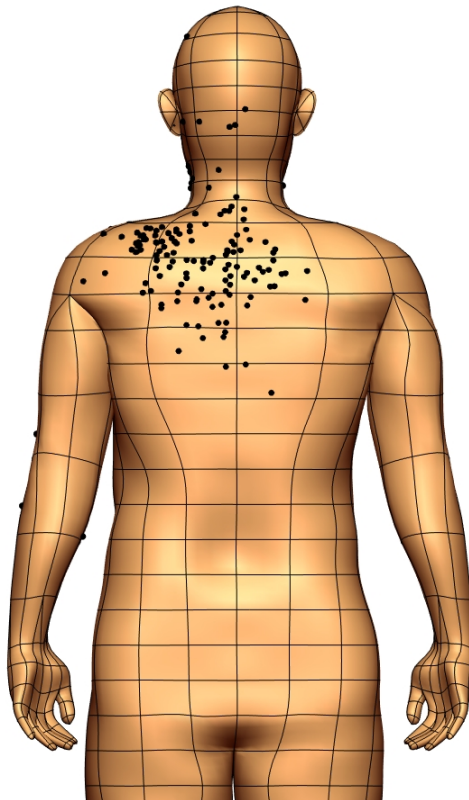
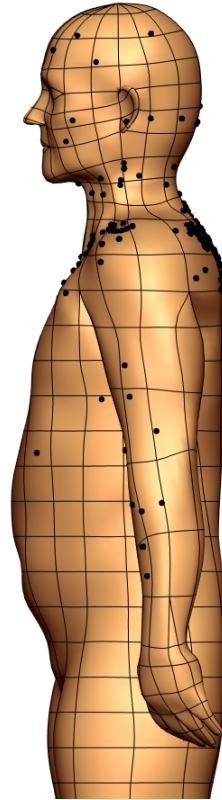
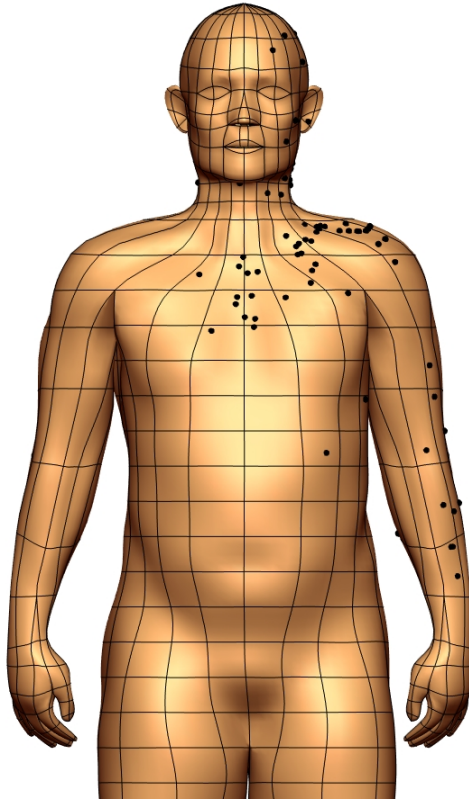
FREQUENCY PLOTS:



Supraclavicular fossa nodefields

Left supraclavicular fossa drainage (lsc):

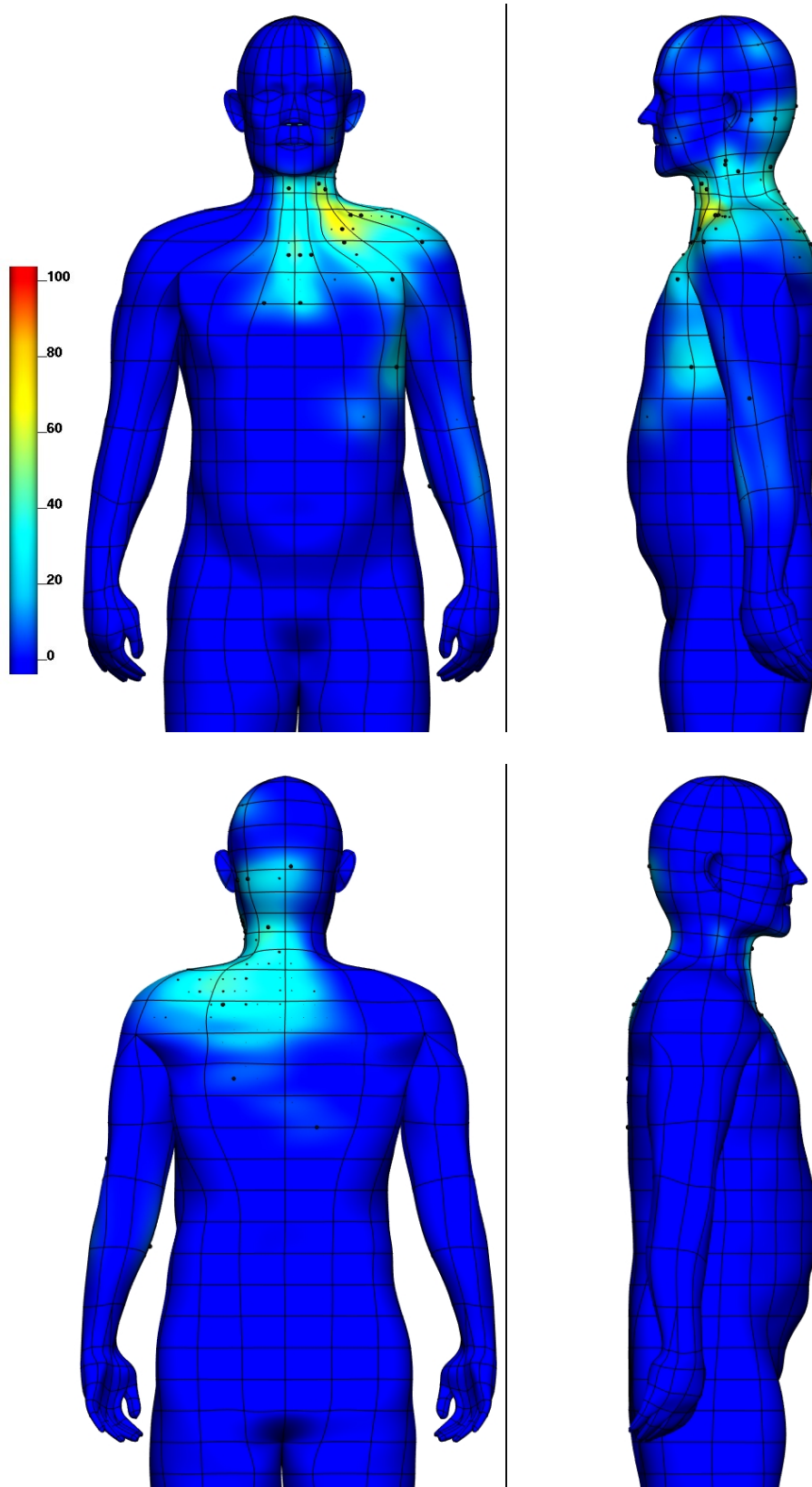
RANDXY PLOTS:



Supraclavicular fossa nodefields

Left supraclavicular fossa drainage (lsc):

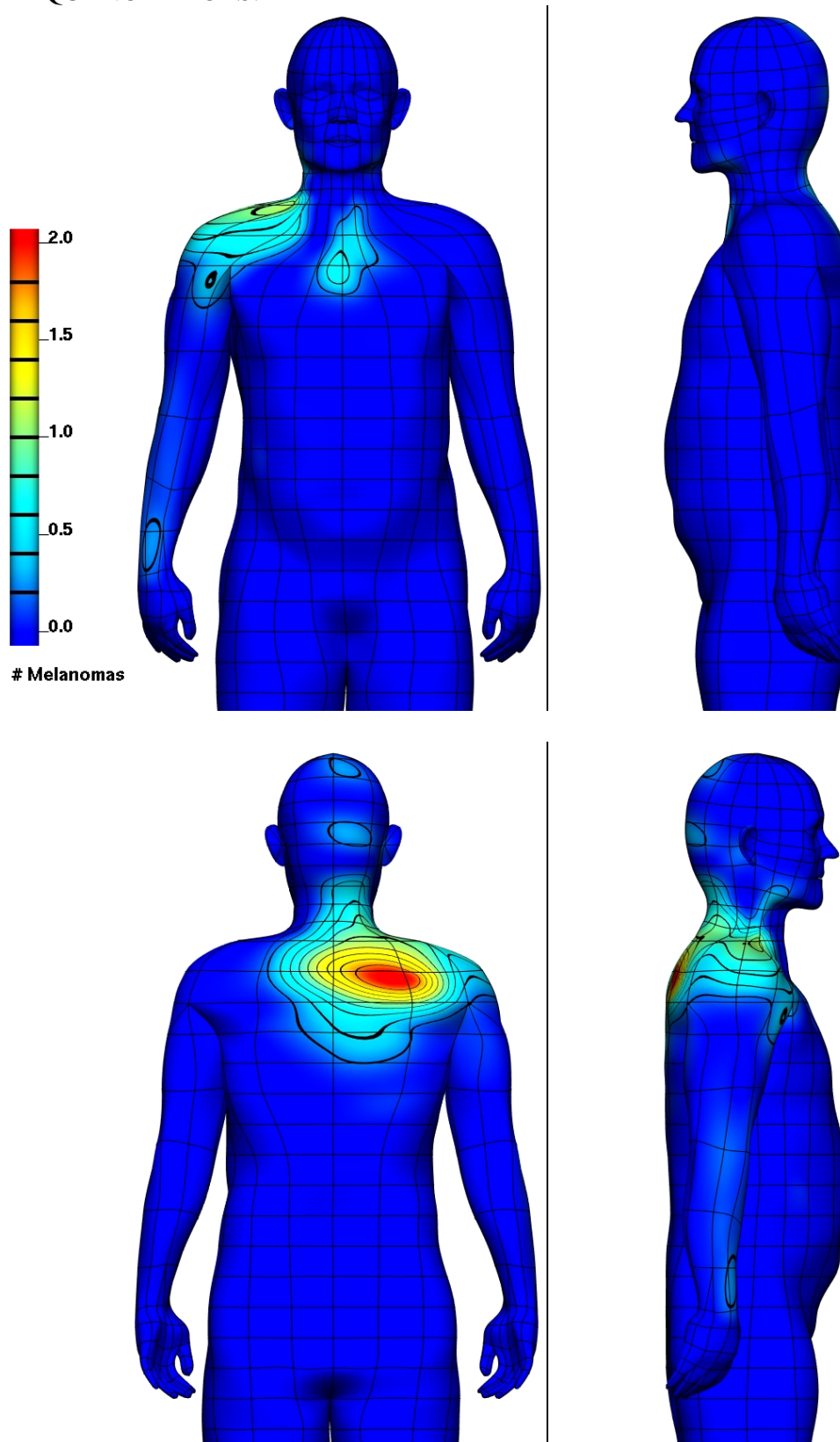
PERCENTAGE LIKELIHOOD PLOTS:



Supraclavicular fossa nodefields

Right supraclavicular fossa drainage (rsc):

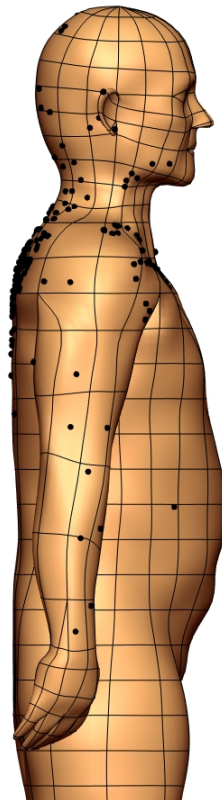
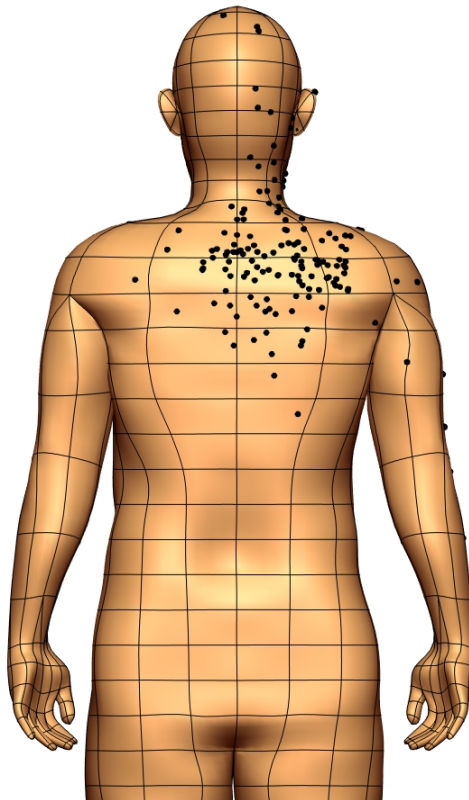
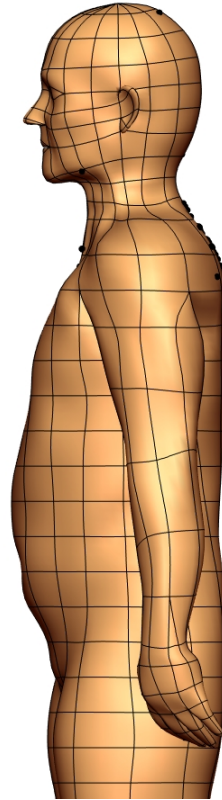
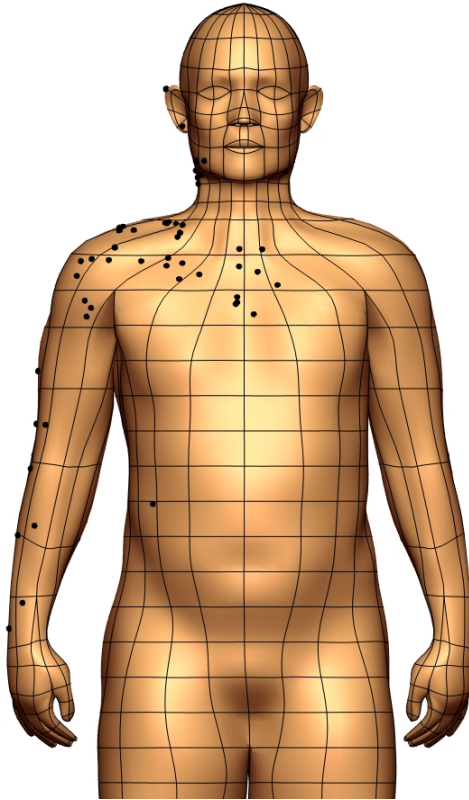
FREQUENCY PLOTS:



Supraclavicular fossa nodefields

Right supraclavicular fossa drainage (rsc):

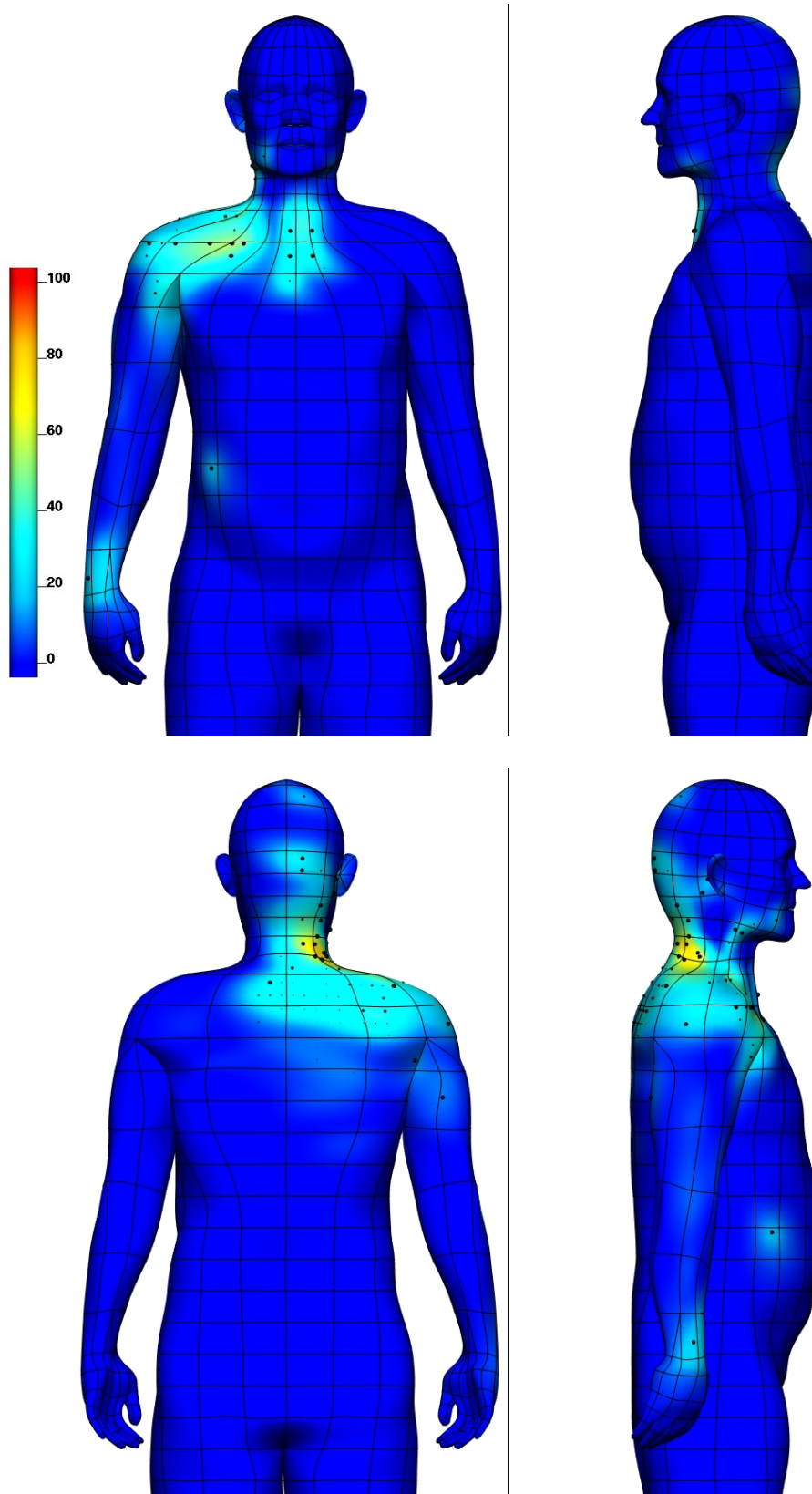
RANDXY PLOTS:



Supraclavicular fossa nodefields

Right supraclavicular fossa drainage (rsc):

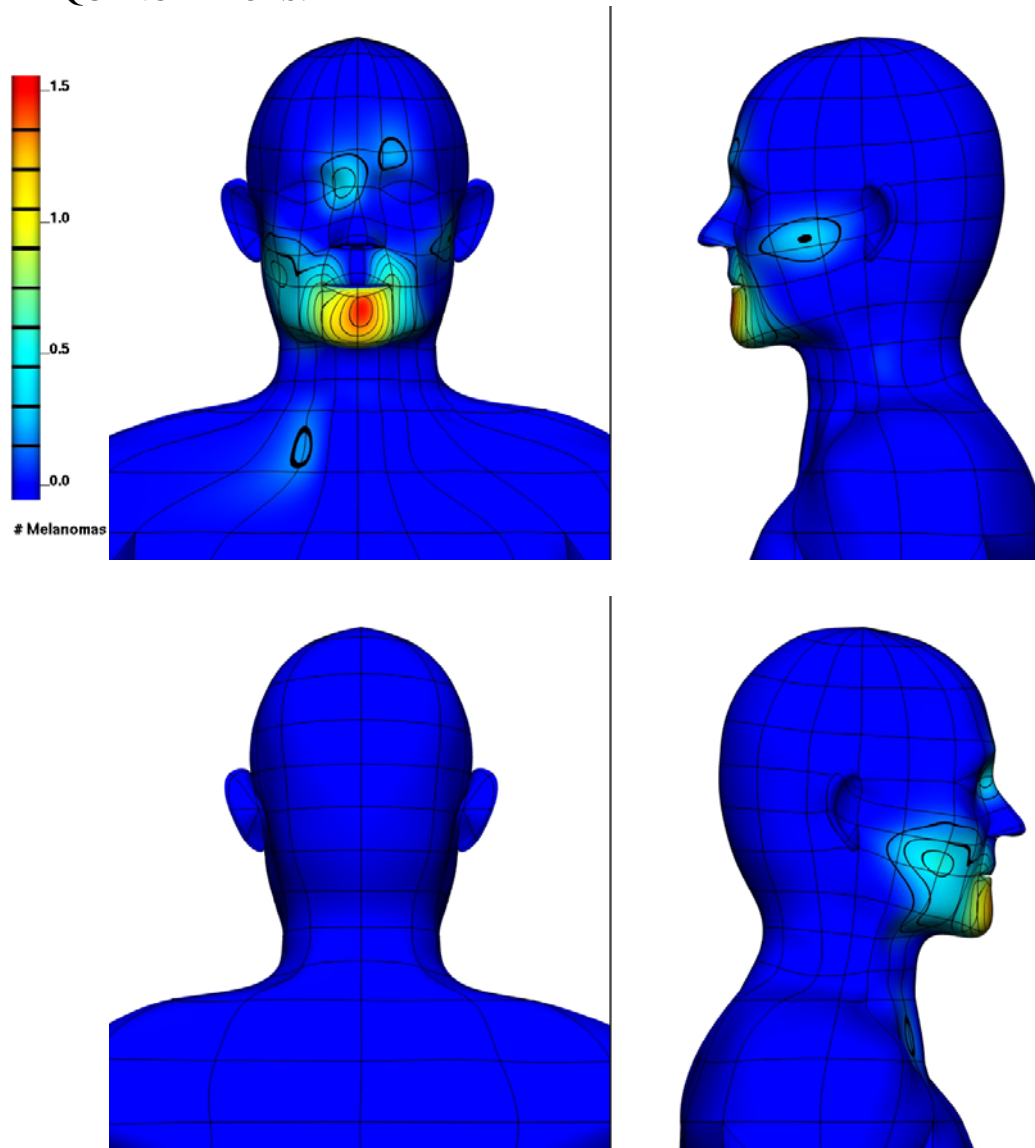
PERCENTAGE LIKELIHOOD PLOTS:



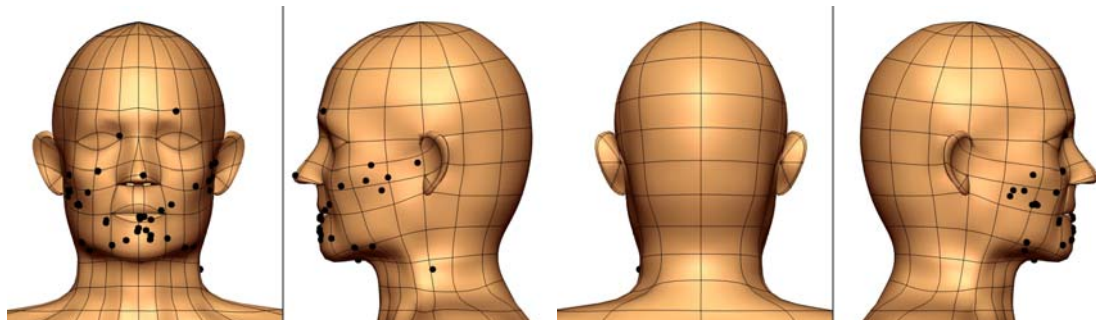
Submental nodefield

Submental drainage (sm):

FREQUENCY PLOTS:



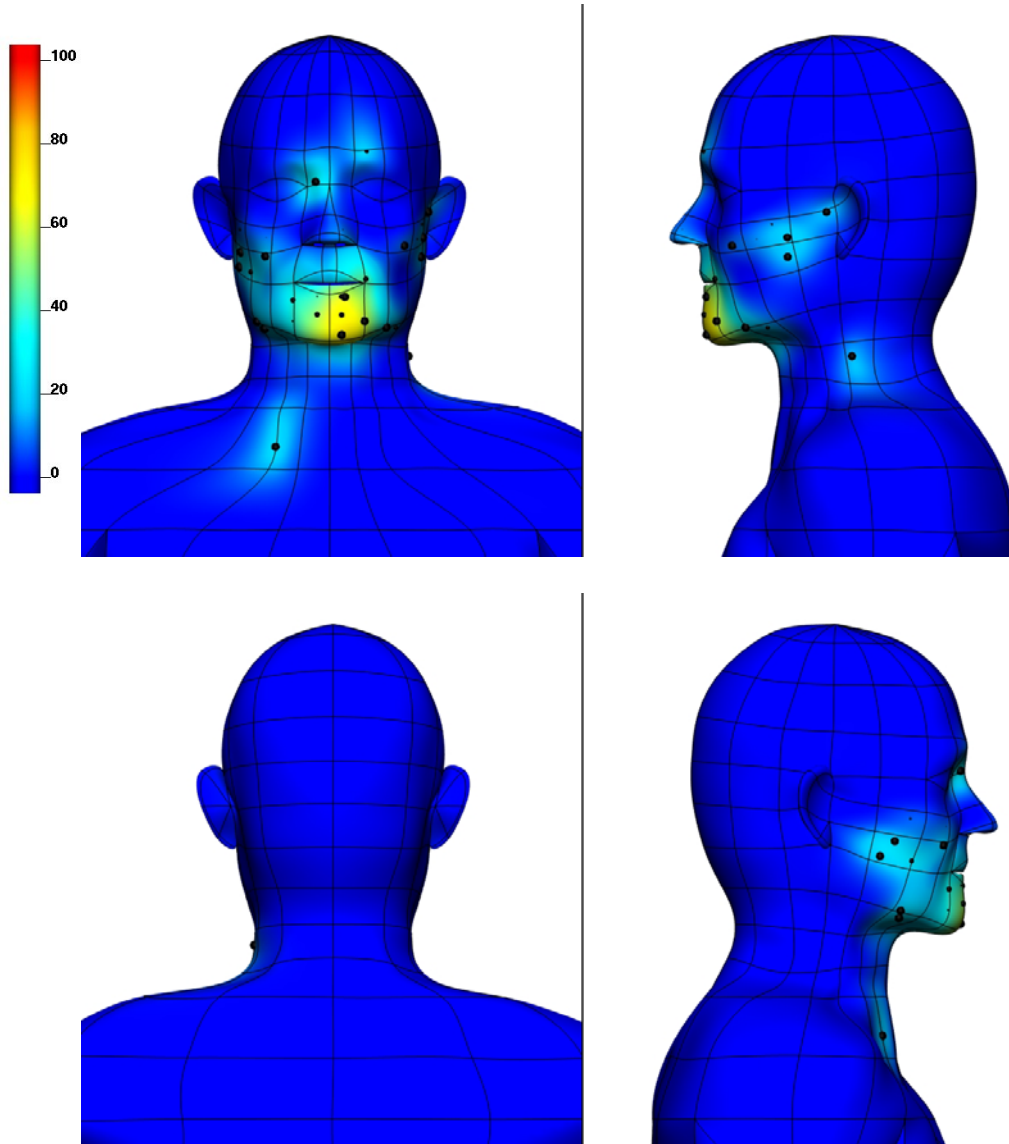
RANDXY PLOTS:



Submental nodefield

Submental drainage (sm):

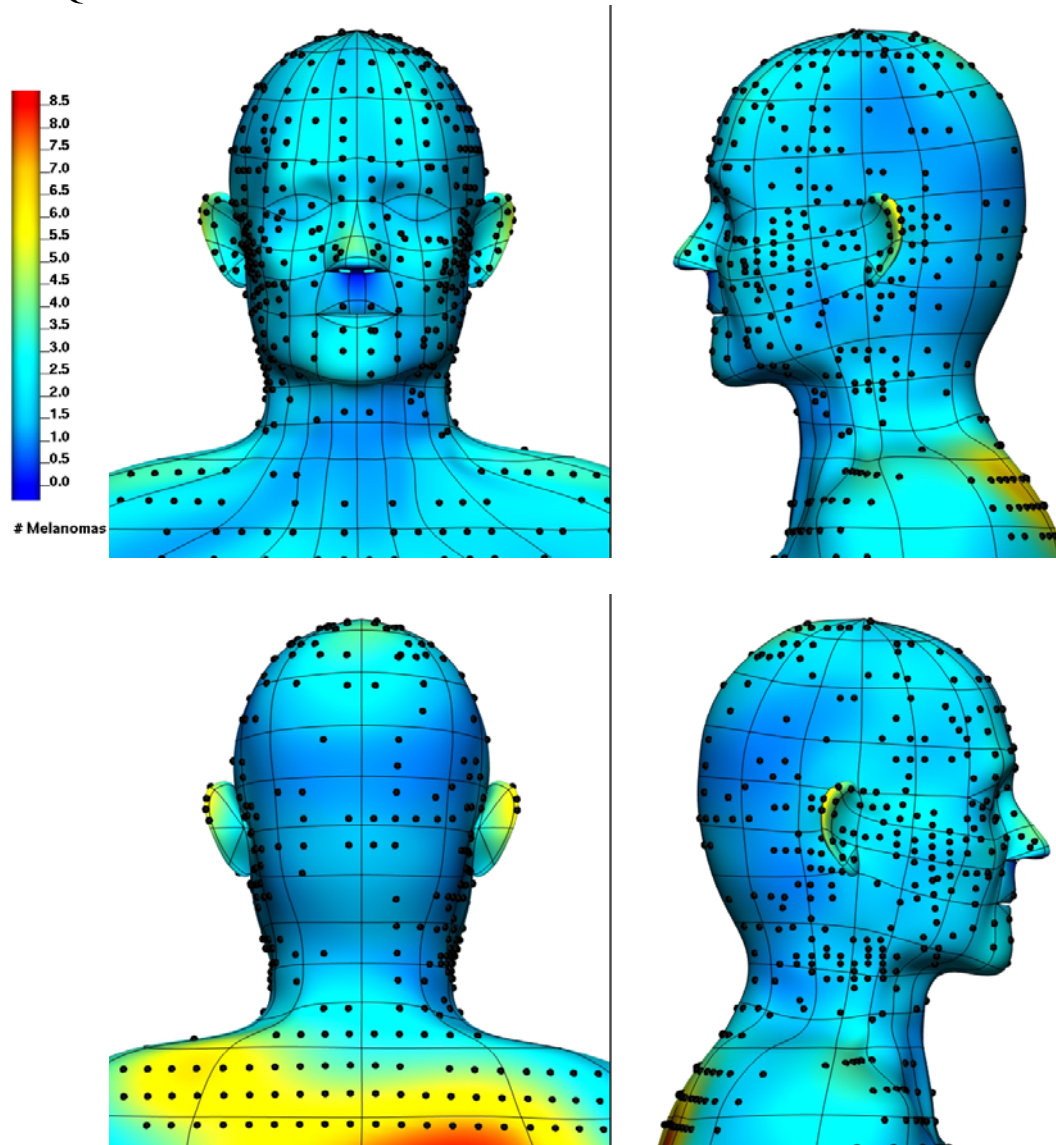
PERCENTAGE LIKELIHOOD PLOTS:



Tues 10 April 07

All melanoma sites

FREQUENCY PLOTS:



RMS = 1.44175 mm

All melanoma sites

RANDXY PLOTS:

